

SAVIN®

7025

Digital Imaging System

COPY >

PRINT >

SCAN >

FAX >

FINISH >



**Efficient and productive
from start to finish.**

The all-in-one that gets more done.

Successful business leaders always want more: more projects, more productivity, and more efficiency. What they don't want is more expense. That's where the Savin 7025 Digital Imaging System comes in. It provides the capabilities small departments, workgroups and independent businesses need—including copying, printing, scanning, faxing and finishing. More importantly, it packs all these user-friendly capabilities into one fast, affordable, compact device.



Widely spaced keys with LED indicators make all of your jobs easier to program.

Total versatility meets practical affordability

Some companies value fast speeds and sophisticated security. Others put the priority on advanced capabilities and network technology. Now you don't have to compromise. The Savin 7025 Digital Imaging System gives you all the versatility you need while also addressing affordability. No matter how you order your priorities, productivity and reducing costs is always at the top.

Fast, reliable and user-friendly

When you want to increase productivity, you can work faster or work smarter. The Savin 7025 allows you to do both.

- Pick up your pace with 25 ppm copy and print speeds.
- Minimize handling time using the 50-Sheet Automatic Reversing Document Feeder.

- Eliminate manual collation and stapling with the optional finisher.
- Save paper and shelf space when you print or copy two-sided documents with stackless duplexing capability.
- Keep jobs running with minimum intervention using the generous 2,100-sheet paper supply.
- Streamline document management when you scan, distribute and archive up to 11" x 17" originals.

The latest networking and printing capabilities

Great capabilities alone won't keep you productive. You also need a system that works with today's most popular operating systems and printer languages. With the Savin 7025 you can:

- Accept data from Windows, Macintosh, Novell and Linux network operating systems.

- Finish documents quickly via an icon-based Graphical User Interface using Savin's Refined Print Command Stream (RPCS) print driver.
- Output documents generated from the most common business applications with standard PCL5e/6 print drivers or optional Adobe® PostScript®3™.
- Use PDF Direct Print feature to print PDFs quickly without opening an application and slowing down the network.

Time- and money-saving document distribution

Electronic document management and distribution can have a powerful impact on your bottom line. The Savin 7025 makes saving time and money as easy as a mouse click with a variety of user-friendly Scan-to-Email/Folder and DeskTopBinder functions.

- Eliminate postage and overnight delivery charges when you scan hardcopies and send them directly to designated e-mail addresses.

- Share files with recipients instantly and simultaneously.
- Allow multiple users to access a single document at their convenience with Scan-to-Folder.
- View and combine documents stored in various folders and created using different applications into one file with a single set of attributes with DeskTopBinder V5 Lite.

Faster, more efficient faxing

Whether you're sending or receiving a few—or a few hundred—faxes a day, the Savin 7025 gives you a wide range of options to make it more efficient and cost effective.

- Send hardcopies at a quick 2 seconds per page along analog lines via the Super G3 modem.
- Save phone charges and paper when you use Internet Fax to send scanned documents directly to an e-mail address or another Internet Fax.

- Save time and paper with LAN Fax and send faxes directly from your desktop.
- Ensure accurate distribution when you retrieve fax numbers and e-mail addresses from the corporate address book on the LDAP server.
- Deliver inbound faxes quickly by automatically forwarding them to e-mail addresses or network folders.

Beyond basic networking

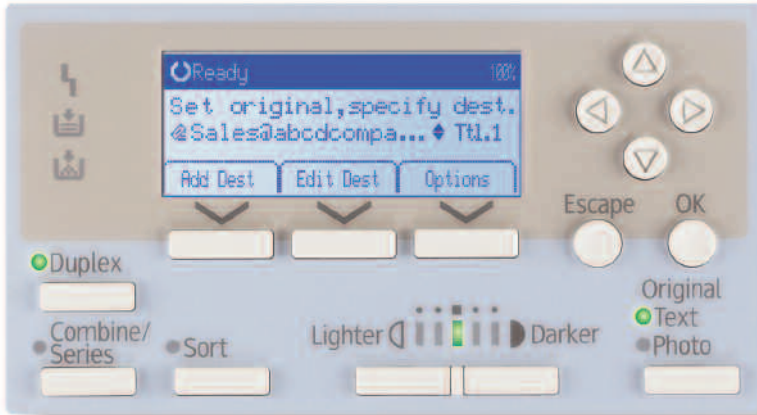
A standard 10Base-T/100Base-TX or USB 2.0 interface simplifies setup. The Savin 7025 is also equipped with the latest integration software and tools to streamline installation, configuration and day-to-day administration.

- Manage all system settings and check on job status and paper supply from any Web browser with Web Image Monitor.
- Monitor all systems on the network or change and download driver default settings from your desktop using SmartDeviceMonitor/ Web SmartDeviceMonitor.

Versatile Functionality In One Compact Device

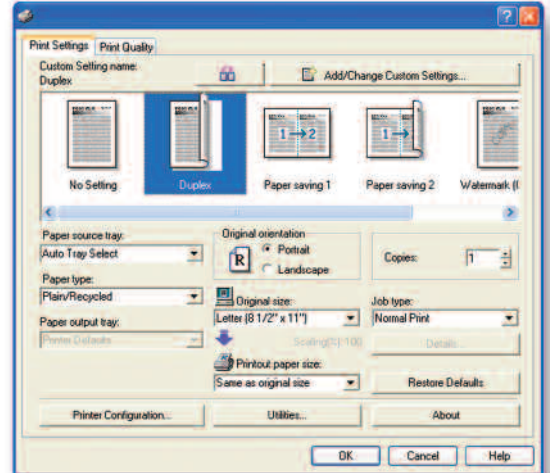


Scan-to Technology



Savin Scan-to-Email/Folder technology lets you send documents cost-free to any network destination in the world.

RPCS Print Driver



Savin's Refined Print Command Stream (RPCS) lets you simplify job settings, so you can run even the most complex documents with one mouse click.

Intelligent remote management system

Companies with cost-per-copy leases can eliminate manual MFP and printer data collection and reporting using the @Remote Intelligent Remote Management System.



With the @Remote system you can also:

- Save time by having @Remote automatically notify your service provider when the system needs service or toner.
- Keep the device up-to-date with remote firmware upgrades.

Ensuring data security

Protecting proprietary and confidential company data is crucial to staying competitive—and to your peace of mind. The Savin 7025 comes equipped with the latest security to limit access, track usage and protect sensitive information.

- Prevent unauthorized users from accessing the system with several modes of user authentication including Windows and LDAP.
- Scramble data and passwords as they travel over the network using Secure Socket Layer (SSL) Support.
- Block hackers from wireless communications with WPA Support (Wi-Fi Protect Access).
- Eliminate illegal or unwanted copying when you implement Mask Type for Copying, which automatically embeds a masking pattern onto the file.

Your Environmental Partner

Savin continues its long-standing commitment to developing office solutions with environmentally friendly and superior energy- and supply-saving features, without compromising productivity, including:

- Quick Start-Up (QSU) Technology
- Power-Saving Sleep Mode
- Duplex and Combine Copy Modes
- Internal Toner Recycling Mechanism
- Low Noise Levels
- Minimal Ozone Emissions
- Restriction of Hazardous Substances (RoHS) Compliant



50-Sheet Automatic Reversing Document Feeder (ARDF) – Option

Easily handle up to 11" x 17" simplex and duplex originals.

High-Speed Analog or Network Faxing

Send and receive paper or electronic faxes, and forward inbound faxes to e-mail addresses or network folders.

500-Sheet Finisher – Option

Save time and organize documents more professionally.

Two Standard 500-Sheet Paper Trays

Minimize interruptions.

Paper Bank – Option

Tackle extra-large jobs without intervention when you add the optional Paper Bank with two 500-Sheet Trays, boosting paper capacity to 2,100 sheets.



Easy-to-Use Control Panel
Simplifies walk-up operations.

100-Sheet Bypass Tray
Print single- or double-sided documents on a variety of paper stocks and sizes.

Internal One-Bin Tray – Option
Separate copy output from print or fax output (standard on 7025spf).

Duplex Tray
Save paper and filing space with double-sided printing.

Easy Grip Paper Handles
For easy access to the paper trays.

Choose the configuration that meets the requirements of your office



Copier



Scan/Print/Fax

ARDF and Cabinet are optional.

Pre-configured to meet your needs

The Savin 7025 is available as a pre-configured total document management solution with copy, print, scan and fax features. You may also start with a standard copier model and add the following connectivity kits as your business grows or the need arises.

- **Printer Enhance DDST Kit**—A low-cost solution for users requiring networked PCL Emulation printing and TWAIN Scanning.
- **Fax Kit**—Expand your copier to include 33.6 Kbps modem faxing capability.
- **Printer/Scanner Kit**—Adds PCL & RPCS printing with Scan-to-Email/Folder capabilities, Device Monitoring (Web Image Monitor and SmartDeviceMonitor) and the latest security features.
- **All-in-One Kit**—This total document solution includes Scan-to-Email/Folder capabilities, Advanced (IP, Internet, and LAN) Faxing and Device Monitoring (Web Image Monitor and SmartDeviceMonitor), plus the latest security features.

ENGINE/COPIER SPECIFICATIONS

Configuration	Console
Scanning Element	Flatbed with CCD Array Image Sensor
Toner	Dry Process (dual component)
System Memory	16 MB/384 MB (7025), 384 MB (7025spf) std./max. (shared)
Document Feeder	Optional 50-Sheet ARDF
Copy Resolution	600 x 600 dpi
Grayscale	256 Levels
Exposure Adjustment	Manual & Automatic
Quantity Indicator	1-999
Original Type	Sheet/Book
Original Size	Up to 11" x 17"
Copy Size	5.5" x 8.5" to 11" x 17"
Copy Type	Plain Paper, Envelopes
Warm-Up Time	Less than 26 Seconds
First-Copy Speed	Less than 6 Seconds
Continuous Copy Speed	25 copies/minute (letter), 16 copies/minute (legal), 14 copies/minute (ledger)
Recovery Time (from Auto Off)	Less than 10 seconds
Power Source	120 V/60 Hz
Dimensions (WxDxH)	25.6" x 23.8" x 24.4"
Weight	121 lbs.
Standard Paper Capacity	500 Sheets x 2 Trays, 100-Sheet Bypass Tray
Optional Paper Capacity	500 Sheets x 2 Trays
Paper Size	5.5" x 8.5" to 11" x 17"
Paper Weight	16 to 28 lb. Bond (Tray 1) 14 to 41 lb. Bond (Tray 2 & Bypass Tray)
Output Tray Capacity	16 to 28 lb. Bond (Duplex Unit) 250 Sheets 100-Sheet One-Bin Tray (Optional) 500-Sheet Finisher (Optional)
Reduction Ratios	50%; 65%; 78%; 93%
Enlargement Ratios	121%; 129%; 155%
Zoom	50% to 200% in 1% increments

COPIER FEATURES

Auto Paper Selection, Auto Reduce/Enlarge, Auto Start, Auto Tray Switching, Combine Copy (2 in 1, 4 in 1), Electronic Sort, Image Rotation, Photo Mode, Rotate Sorting, Series Copy, User Codes (50), User Tools

PRINTER ENHANCE DDST KIT (OPTIONAL)

Printer Specifications

Print Speed	25 ppm
CPU	D7801M 200 MHz
Memory Capacity	64 MB std./max.
Standard Interfaces	Ethernet 10BaseT/100BaseTX; USB 2.0
Network Protocol	TCP/IP; IPP
Network Operating Systems	Windows® 98/2000/XP/XP 64 Bits/Me/Server 2003 (Standard Edition)
Page Description Languages	PCL5e*/6

Print Resolution	600 x 600 dpi
Fonts for PCL5e/6	35 Intellifonts, 10 TrueType Fonts, 1 Bitmap
Printer Features	Automatic Tray Select, Duplex Printing, Envelope Printing, Watermarks

Scanner Specifications

Scanning Resolution	600 dpi
Scan Area	Up to 11" x 17"
Standard Interfaces	10BaseT/100BaseTX; USB 2.0
Protocol	TCP/IP
Scanner Features	Black & White TWAIN Scanning, Duplex Scanning

*Available as a download from the Savin website.

PRINTER/SCANNER KIT (OPTIONAL)

Printer Specifications

Print Speed	25 ppm
CPU	RM5231 400 MHz
Memory Capacity	384 MB (std./max.)
Standard Interfaces	Ethernet 10BaseT/100BaseTX, USB 2.0
Optional Interfaces	IEEE 802.11b Wireless LAN, Bluetooth™, IEEE 1284 Parallel
Network Protocol	TCP/IP; IPX/SPX; AppleTalk; SMB
Network Operating Systems	Windows® 9x/NT4.0/2000/Me/XP/Server 2003/Vista* Macintosh® OS 8.6 or later, Mac® OS X Classic, Mac® OS X Native: v.10.1 or later Novell® NetWare 3.12, 3.2, 4.1, 4.11, 5.0, 5.1, 6, 6.5, UNIX filters for Sun Solaris 2.6/7/8/9/10 HP-UX 10.x/11.x/11iv2, SCO OpenServer 5.0.6 /5.0.7/6.0, RedHat Linux 6.x/7.x/8.x/9.x/Enterprise and IBM AIX V4.3 & 5L Version 5.1/5.2 /5.3, SAP R/3 3.x or later, mySAP ERP2004 or later SmartDeviceMonitor™, Web Image Monitor™, Web SmartDeviceMonitor™, DeskTopBinder™ Lite Standard RPCS™, PCL5e/6, Optional Adobe® PostScript® 3™ 600 x 600 dpi 35 Intellifonts, 10 TrueType Fonts, 1 Bitmap, 13 International Fonts 136 Roman Fonts Automatic Tray Select, Auto Tray Switching, Duplex Printing, Envelope Printing, Watermarks
Utilities	
Page Description Languages	Standard RPCS™, PCL5e/6, Optional Adobe® PostScript® 3™
Print Resolution	600 x 600 dpi
Fonts for PCL5e/6	35 Intellifonts, 10 TrueType Fonts, 1 Bitmap, 13 International Fonts
Fonts for PS3	136 Roman Fonts
Printer Features	Automatic Tray Select, Auto Tray Switching, Duplex Printing, Envelope Printing, Watermarks

Scanner Specifications

Scanning Speed	Scan-to-Email/Folder: 40 ipm @ 200 dpi, Letter Size
Scanning Resolution	600 dpi
Grayscale	256 Levels
Scan Area	Up to 11" x 17"
Standard Interfaces	Ethernet 10BaseT/100BaseTX
Optional Interfaces	IEEE 802.11b Wireless LAN
Protocol	TCP/IP
File Formats	TIFF; PDF
Scanner Features	Black & White Scanning, Duplex Scanning, Embedded Scan-to-Email, Image Rotation, Network TWAIN Scanning, Scan-to-Folder (SMB/NCP/FTP)

*Support for RPCS and PCL PostScript will be available as a download from the Savin website at a later date.

SECURITY FEATURES*

User Authentication, SNMP v3, Mask Type for Copying, Encrypt Address Book, Secure Socket Layer (SSL)

*Requires Printer/Scanner Kit or All-in-One Kit.

FAX SPECIFICATIONS (OPTIONAL)

Circuit	PSTN, PBX
Compatibility	ITU-T G3
Resolution	200 x 100/200 dpi
Compression Method	MH, MR, MMR, JBIG
Scanning Speed	0.8 Seconds (200 x 100, 200 x 200)
Modem Speed	33.6 Kbps – 2,400 bps w/Auto Fallback
Transmission Speed	G3: 3 seconds/page (w/MMR)*, ** G3: 2 seconds/page (w/JBIG)*, ** 4 MB (320 Sheets*)
Memory	
Memory Backup	1 Hour

FAX SPECIFICATIONS (OPTIONAL) cont.

Quick Dials	32
Speed Dials	150
Group Dials	10 (max.100 per group)
ID Code Programming	4 Digits
User Function Key	3 Keys

*Based on ITU-Test Chart #1 in standard mode.

**Approximate speed is per page at 33.6 Kbps and dependent on optimal line quality. Customer performance may vary by location.

FAX FEATURES

A1 Short Protocol, Authorized Reception, Auto Reduction, Battery Backup, Dual Access, Duplex Fax Transmission, Error Correction Mode, Inbound Fax Routing*, IP Fax*, Internet Fax (T.37)*, LAN Fax*, Manual Reception, Page Retransmission, Parallel Memory Transmission, Reception Time Printing, Restricted Access, Send Later, Serial Broadcasting, Substitute Reception

*7025 requires optional All-in-One Kit

ACCESSORIES

DF3020 Automatic Reversing Document Feeder

Original Size	5.5" x 8.5" to 11" x 17"
Original Weight	11 to 34 lbs. (Simplex) 14 to 28 lbs. (Duplex)
Original Capacity	50
Dimensions (WxDxH)	21.7" x 18.5" x 5"
Weight	22.1 lbs.

PB3030 Paper Bank

Paper Capacity	500 Sheets x 2 Trays
Paper Size	5.5" x 8.5" to 11" x 17"
Paper Weight	16 to 28 lb. Bond
Dimensions (WxDxH)	21.7" x 20.5" x 10.7"
Weight	55.1 lbs.

SR3010 Finisher

Paper Capacity	500 Sheets
Staple Capacity	50 Sheets (Letter), 30 Sheets (Legal and Ledger)
Staple Positions	1 Staple/2 Positions 2 Staples/1 Position

Dimensions (WxDxH)

16.2" x 20.5" x 10.8"

Weight

26.5 lbs.

BN3020 One-Bin Tray

Paper Size 5.5" x 8.5" to 11" x 17"

Paper Weight 16 to 28 lb. Bond

Paper Capacity 100 Sheets

ADDITIONAL OPTIONS

Platen Cover Type 1018
Counter Interface Type A
Handset Type 1018
IEEE 1284 Interface Board Type A
PostScript 3 Type 2500
FAC 36 Stand
FAC 37 Cabinet
IEEE 802.11b Interface Type H
Bluetooth Interface Unit Type 3245
VM Card Type D
Bridge Unit Type BU3010
Fax Type 2500 Kit
Printer Enhance DDST Type 2500NA
Printer/Scanner Type 2500 Kit
All-in-One Type 2500 Kit