

# SAVIN®

## 8025e/8030e

B/W Digital Imaging Systems

PRINT >

COPY >

SCAN >

FAX >

**SUCCEED >**



**Work smarter, faster, better.**



## Raising the bar.

The Savin 8025e/8030e Series gives you virtually every tool you need to duplicate, distribute, e-mail and archive your documents, while protecting the security of your network and your data. The result: your organization is more productive, more responsive, more cost-efficient, more secure and more competitive.



The large touch-screen control panel makes navigation quick and easy.

### Fast, high-quality copies.

The Savin 8025e/8030e Series offers all the copy quality and speed your business or work group needs: up to 30 prints per minute and 600 dpi, with an incredibly short first-copy time of 4.4 seconds. Add in its 3,100-sheet paper capacity and variety of finishing choices, and you've got a powerful digital copier that can enhance your productivity for years to come.

### Network printing: flexible, powerful, secure.

Working smarter and faster begins at the network level. The Savin 8025e/8030e Series was designed with advanced network printing features that smooth both installation and everyday workflow.

- Ensure easy connectivity to your network with 10/100 BaseTX Ethernet and USB 2.0 interfaces.
- Provide compatibility to both PC and Mac™ platforms with PCL5e/6 and Adobe® Postscript® 3™.

- Reduce network traffic and boost productivity with PDF Direct Print, which allows you to send PDFs directly to the printer without opening the application.
- Simplify security and eliminate having to store your documents in physical mail bins with Store/Locked/Hold Print.

### Connect it to your network—securely.

The Savin 8025e/8030e Series is a fast, effective and low-cost way to distribute information. It can connect you and your scanned documents—in total security—to any e-mail address in the world.

- Deliver scanned documents directly to e-mail addresses or automatically file them into folders to share, eliminating the need to detach and save documents manually.
- Scan to a wide selection of file formats, including TIFF, TIFF-F, PDF and JPEG.
- Access up to five corporate LDAP servers, making efficient use of existing information and saving programming time.

## Cut communication costs with advanced faxing.

The Savin 8025e/8030e Series features a 33.6 Kbps modem with standard JBIG compression, 2,000 dial keys and can handle up to three G3 lines at once. Or elevate faxing from a paper-to-paper transaction to an inexpensive distribution as digital documents.

- Conveniently fax digital documents directly from your PC with LAN fax, eliminating steps and saving time.
- Ensure that documents are automatically routed to critical locations with Fax Forward to folder/e-mail/hard-drive capabilities.
- Quit paying long-distance and international phone costs: now you can send and receive faxes over your LAN or WAN with IP Faxing (T.38), an extremely fast and high-quality means of communication.

## The secure solution for your documents and your network.

With identity and document theft becoming an increasing problem, the Savin 8025e/8030e Series was designed to safeguard information at every point in the printing, transmission and distribution process.



- Guard access to your network PC by requiring users to input their existing names and passwords with Windows/LDAP Authentication.
- Limit user rights by application with Unauthorized Access, giving you another level of data security.
- Protect data from interception, falsification and tampering during transmission with Encryption.
- Prevent unauthorized persons from seeing sensitive documents lying in output trays with Stored Print/Hold Print, which delays output runs until the user releases them during walk-up.

- Make it virtually impossible to access and reconstruct residual image data with the DataOverwriteSecurity System (DOSS), which automatically overwrites the “latent image” left in the internal hard drive after a job is completed.

## System management from your desktop.

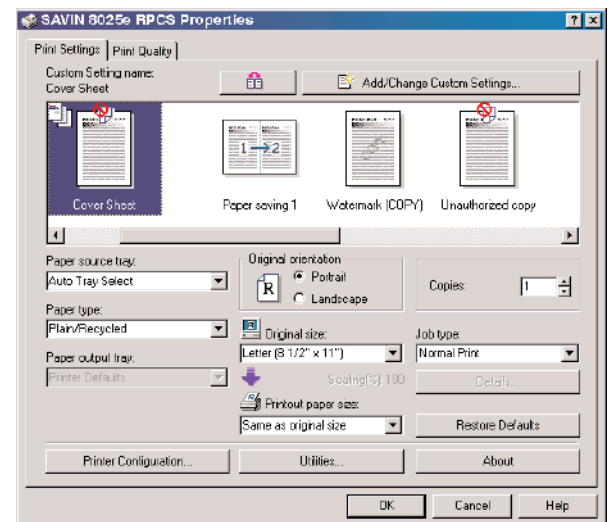
You're too busy getting the work done for your organization to worry about the status of your peripherals. That's why the Savin 8025e/8030e Series is designed to virtually take care of itself: it can even send alert e-mails if it's low on toner or otherwise needs attention to optimize performance.

If staying on top of your system's performance is something you would rather control yourself, just launch Web Image Monitor to check status, program settings and make changes to your address book from a Web browser.

## Scan-To-URL



Scan-to-URL improves information sharing in your organization while minimizing network traffic.



Even the most complex jobs can be simplified to a one-click operation with Savin's proprietary Refined Print Command Stream (RPCS) driver. This icon-based driver provides comprehensive job control that allows even novice users to create professional documents easily.

# 8025e/8030e B/W Multifunctional Systems

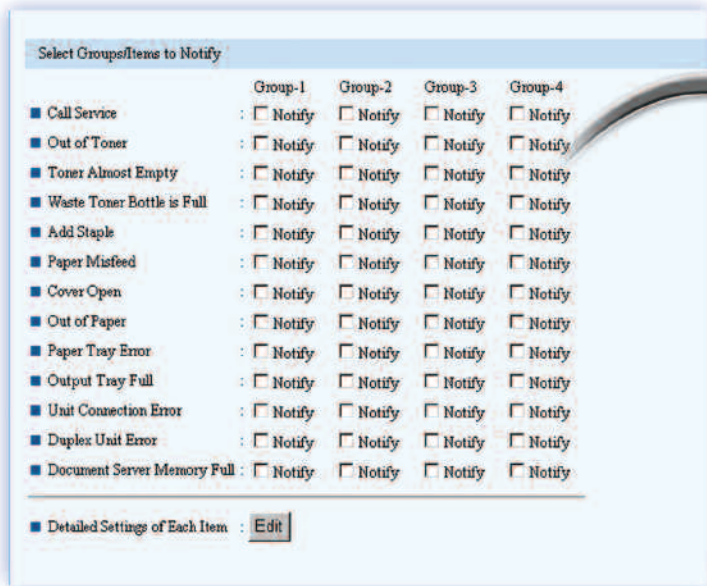
PRINT >

COPY >

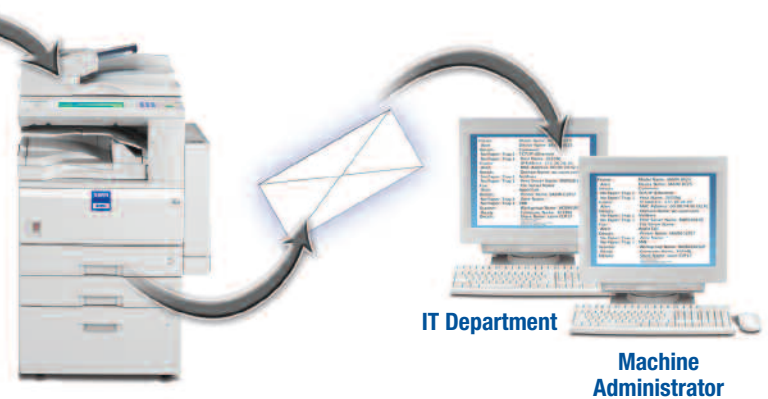
SCAN >

FAX >

SUCCEED >



## Auto Alert E-mail Notification



The Savin 8025e/8030e Series automatically sends an alert report to designated e-mail addresses when it detects a problem.

## documentmall

### Manage your electronic documents.

Savin's DocumentMall™ is powerful document management software that is delivered as an on-demand service over the Internet. Seamless integration with the Savin 8025e/8030e Series allows you to scan hard-copy documents directly to DocumentMall and gives businesses of all sizes the ability to:

- Store business-critical documents in one secure location.
- Manage paper and electronic documents over the Internet from the convenience of a PC.
- Share documents with anyone, anywhere, at anytime.
- Protect documents with state-of-the-art security and facilities.

A flexible and cost-effective solution, DocumentMall addresses a wide range of document management needs—from simple “file and find” applications such as document archiving and disaster readiness, to global sharing and collaboration with employees, partners and customers.

## Embedded Software Architecture

### Customize your system, enhance your workflow.

Savin's Embedded Software Architecture—an innovative Java (J2ME)-compatible software development platform—allows you to develop customized applications for the Savin 8025e/8030e Series, dramatically enhancing your organization's workflow. All models within the series can easily be customized to meet your needs by controlling features such as the operation panel, printing, saving files and scanning.

## Your Environmental Partner

Savin continues its long-standing commitment to developing office solutions with environmentally-friendly and superior energy- and supply-saving features, without compromising productivity, including:

- Quick Start-Up (QSU) Technology
- Power-Saving Sleep Mode
- Duplex and Combine Copy Modes
- Internal Toner Recycling Mechanism
- Low Noise Levels
- Minimal Ozone Emissions
- Restriction of Hazardous Substances (RoHS) Compliant



**50-Sheet Automatic Reversing Document Feeder (ARDF) – Option**

Enables fast, productive scanning for both one- or two-sided documents up to 11" x 17".

**125-Sheet One-Bin Tray – Option**

Automatically separates copy output from fax and print, and lights up when output is present.

**Finisher – Option**

500-Sheet Finisher with 30-sheet staple capacity and 1-position stapler produces professional-looking documents quickly and conveniently.

**Paper Trays – Option**

Two user-adjustable 500-Sheet Paper Drawers expand capacity to hold up to five different sizes or orientations of paper.

**Control Panel**

Large touch-screen Control Panel makes navigation easy.

**Duplex Unit**

Allows unlimited printing of two-sided documents, reducing filing space and costs.

**Bypass Tray**

100-Sheet Bypass Tray allows for printing on labels, envelopes or special papers.

**Paper Trays – Standard**

Two user-adjustable 500-Sheet Drawers support paper weights up to 42 lb. – ideal for printing labels, envelopes and other odd-sized documents.



**Choose the configuration that meets the particular requirements of your office.**



**For an affordable printing solution with a flexible upgrade path for scanning and faxing.**

**For productive printing and document handling.**

**For total document needs in a space-saving design.**

**For secure document storage, management and distribution via the Internet.**

**PRINT >**

**COPY >**

**SCAN >**

**FAX >**

**SUCCEED >**

## ENGINE/COPIER SPECIFICATIONS

|                                  |  |
|----------------------------------|--|
| Configuration                    | Console  |
| Scanning Element                 | Flatbed with Moving CCD<br>Array Image Sensor  |
| Printing Process                 | Single Laser Beam Scanning &<br>Electrophotographic printing   |
| Toner                            | Dry, Dual Component  |
| Document Feeding                 | Optional 50-sheet ARDF   |
| System Memory                    | 128/384 MB RAM<br>(std./max.)  |
| Hard Disk Drive                  | 40 GB option   |
| Copy Resolution                  | 600 x 600 dpi  |
| Grayscale                        | 256 levels   |
| Exposure Adjustment              | Manual & Automatic   |
| Quantity Indicator               | Up to 999  |
| Original Type                    | Book/Sheet   |
| Maximum Original Size            | Up to 11" x 17"  |
| Copy Size                        | 5.5" x 8.5" to 11" x 17"   |
| Copy Type                        | Plain Paper, Transparencies,<br>Envelopes  |
| Warm-up Time                     | 12 seconds   |
| First Copy Speed                 | 4.4 seconds  |
| Continuous Copying<br>Speed      | 8025e: 25 copies/minute (LTR)<br>8030e: 30 copies/minute (LTR)   |
| Recovery Time                    | 10 seconds (from Auto Off)   |
| Power Source                     | 120V/60Hz/12A  |
| Dimensions                       | 26"(W) x 23"(D) x 28"(H)   |
| Weight                           | 156 lbs.   |
| Standard Paper Capacity          | 500 sheets x 2 trays, and<br>100-sheet Bypass Tray   |
| Optional Paper Capacity          | 500 sheets x 2 trays or<br>2,000-sheet Large Capacity Tray<br>(LCT)  |
| Paper Size                       | 5.5" x 8.5" to 11" x 17"/<br>A6 to A3  |
| Paper Weight                     | 16 – 28 lb. Bond/60 – 105g/m <sup>2</sup><br>(Tray 1)<br>14 – 42 lb. Bond/52 – 157g/m <sup>2</sup><br>(Tray 2 and Bypass)<br>17 – 28 lb. Bond/64 – 105g/m <sup>2</sup><br>(Duplex)   |
| Standard Output Tray<br>Capacity | 500 sheets (LTR)   |
| Reduction Ratios                 | 25%, 50%, 65%, 73%, 78%,<br>85%, 93%   |
| Enlargement Ratios               | 121%, 129%, 155%, 200%, 400%   |
| Zoom                             | 25% to 400% in 1% increments   |
| Standard Features                | Auto Magnification, Auto Paper<br>Select, Auto Tray Switch,<br>Center/Border Erase, Combine Mode,<br>Cover Insertion, Date Stamp,<br>Directional Magnification, 100%<br>Duplex Productivity, Electronic/Rotate<br>Sorting, English Pre-Set Stamps,<br>10 Job Programs, Negative/ Positive,<br>OHP Slip Sheet, Page Number<br>Stamp, Paper Designate, Series<br>Copy, Touch-Screen Control Panel,<br>100 User Codes (optional 500 max.) |
| Optional Features<br>with HDD    | Background Numbering,<br>Booklet/Magazine Copy, Document<br>Server (3,000 file capacity), Reserve<br>Copy and User Stamps  |

## PRINTER SPECIFICATIONS (OPTION)

|                               |   |
|-------------------------------|---|
| Print Speed                   | 8025e: 25 ppm<br>8030e: 30 ppm  |
| CPU                           | RM7035C 466 MHz   |
| Standard Interfaces           | 10/100BaseTX Ethernet<br>USB 2.0  |
| Optional Interfaces           | IEEE 802.11b Wireless LAN<br>Bluetooth<br>IEEE 1284   |
| Memory Capacity               | 384 MB RAM shared   |
| Network Protocol              | TCP/IP, IPX/SPX, AppleTalk  |
| Utilities                     | SmartDeviceMonitor,<br>Web SmartDeviceMonitor,<br>DeskTopBinder V2 Lite,<br>Web Image Monitor   |
| Page Description<br>Languages | PCL 5e/6 emulation*<br>Savin RPCS   |
| Print Resolution              | Adobe PostScript 3 (optional)<br>Up to 600 dpi (2400 x 600 dpi<br>with smoothing)   |
| Grayscale                     | 256 Levels  |
| Fonts for PCL 5e/6            | 35 Intellifonts, 10 TrueType,<br>1 Bitmap and 13 International fonts  |
| Fonts for PS3                 | 136 PostScript Fonts  |
| Network Operating<br>Systems  | Windows 9x/NT4.0/2000/ME/XP Server<br>2003, Netware, Unix; Sun Solaris,<br>HP-UX, SCO OpenServer, Red Hat Linux,<br>IBM AIX, MAC 8.6-9.2x, 10.1+, SAP R/3,<br>NDPS Gateway, IBM iSeries/AS/400*<br>using OS/400 Host Print Transform<br>Form Overlay, Watermarks, Spool<br>Printing, Encryption, Sample/Locked/<br>Hold/Stored Print* |
| Standard Features             |   |

## SCANNER SPECIFICATIONS (OPTION)

|                      |  |
|----------------------|--|
| Scanning Speed       | Embedded Scanning: 52 ipm<br>(@ 200 dpi)               |
| Scanning Resolution  | 600 dpi  |
| Grayscale            | 256 Levels   |
| Scan Area            | Up to 11" x 17"  |
| Interface (standard) | 10/100BaseTX Ethernet                                  |
| Interface (optional) | IEEE 802.11b Wireless LAN                              |
| Protocol             | TCP/IP, NCP, SMB, SMTP, POP 3, IPX,<br>LDAP, FTP, SNMP |
| Memory Capacity      | 384 MB RAM shared                                      |
| File Types           | Single page TIFF/JPEG/PDF,<br>Multi-page TIFF/PDF      |
| Standard Features    | Embedded Scan-to-Email/HDD/Folder/<br>URL and TWAIN    |

## FAX SPECIFICATIONS (OPTION)

|                     |   |
|---------------------|---|
| Circuit             | PSTN, PBX   |
| Compatibility       | ITU-T G3  |
| Resolution          | 200 x 200/100 dpi<br>400 x 400 dpi (Optional)   |
| Compression Method  | MH, MR, MMR, JBIG   |
| Scanning Speed      | 0.40 seconds (LEF)  |
| Modem Speed         | 33.6 Kbps with Auto Fallback  |
| Transmission Speed  | G3: 3 seconds per page<br>(MMR Compression)<br>G3: 2 seconds per page<br>(JBIG Compression)   |
| Memory              | 4 MB standard/28 MB maximum<br>320 pages/2,240 pages  |
| Std/Max Auto Dials  | 500/2000  |
| Group Dials         | 100 (max. 500 numbers per group)  |
| ID Code Programming | 4 digits  |
| User Function Key   | 3 keys  |
| Standard Features   | Auto Document (6), Book Transmission,<br>Dual Access, Duplex Reception, Image<br>Rotation, 1 Hour Backup  |
| Optional Features   | Simultaneous Operation of up to<br>3 Lines (G3 x 3); LAN-Fax Capability,<br>Internet Faxing (T.37), IP Faxing (T.38)<br>Fax Forwarding to E-Mail/ HDD/Folder<br>with Scan/Print installed |

## PS490 PAPER BANK (OPTION)

|                |   |
|----------------|---|
| Paper Size     | 5.5" x 8.5" to 11" x 17"/A5 to A3           |
| Paper Weight   | 16 to 28 lb. Bond/60 to 105g/m <sup>2</sup> |
| Paper Capacity | 2 x 500-sheets                              |
| Dimensions     | 21.7"(W) x 20.5"(D) x 10.7"(H)              |

## LARGE CAPACITY TRAY PS500 (OPTION)

|                |   |
|----------------|---|
| Paper Size     | 8.5" x 11"/A4                               |
| Paper Weight   | 16 to 28 lb. Bond/60 to 105g/m <sup>2</sup> |
| Paper Capacity | 2,000 sheets                                |
| Dimensions     | 21.7"(W) x 20.5"(D) x 10.7"(H)              |

## ONE-BIN TRAY PT280 (OPTION)

|                |   |
|----------------|---|
| Paper Size     | 5.5" x 8.5" to 11" x 17"/A5 to A3           |
| Paper Weight   | 16 to 28 lb. Bond/60 to 105g/m <sup>2</sup> |
| Paper Capacity | 125 sheets                                  |

## SR790 FINISHER (OPTION)

|                 |  |
|-----------------|--|
| Paper Size      | 5.5" x 8.5" to 11" x 17"/A6 to A3  |
| Paper Weight    | 16 to 42 lb. Bond/60 to 157g/m <sup>2</sup>  |
| Stack Capacity  | Proof Tray: 250 sheets<br>(8.5" x 11" or smaller)<br>50 sheets (8.5" x 14" or larger)<br>Shift Tray: 1,000 sheets<br>(8.5" x 11" or smaller)<br>500 sheets<br>(8.5" x 14" or larger) |
| Staple Capacity | 50 sheets (8.5" x 11")<br>30 sheets (8.5" x 14" or larger)   |
| Staple Position | 3 positions (1 staple/2 positions;<br>2 staples/1 position)  |
| Dimensions      | 20.7"(W) x 20.5"(D) x 31.1"(H)   |

## SR820 FINISHER (OPTION)

|                 |  |
|-----------------|--|
| Paper Size      | 7.25" x 10.5" to 11" x 17"/A3 to B5 LEF                    |
| Paper Weight    | 16 to 34 lb. Bond/60 to 128g/m <sup>2</sup>                |
| Stack Capacity  | 500 sheets   |
| Staple Capacity | 30 sheets (8.5" x 11")<br>20 sheets (8.5" x 14" or larger) |
| Staple Position | 1 position   |
| Dimensions      | 13.8"(W) x 19.3"(D) x 9.1"(H)                              |

## ADDITIONAL OPTIONS

|                                     |
|-------------------------------------|
| ARDF DF83 (50 sheet)                |
| Platen Cover Type 1018              |
| FAC20 Cabinet                       |
| Printer/Scanner Kit Type 3010       |
| Fax Type 3030                       |
| G3 Interface Type 3030              |
| 32 MB Fax Memory                    |
| Handset Type 1018                   |
| IEEE 1284 Type A                    |
| IEEE 802.11b Type H                 |
| Hard Disk Drive Type 3030           |
| Adobe PostScript 3 Type 3010        |
| Bridge Unit Type 1027               |
| Internal Shift Sort Tray Type 1027  |
| Key Counter Bracket Type 1027       |
| User Account Enhancement Kit Type E |
| File Format Converter Type B        |
| DataOverwriteSecurity Unit Type D   |
| Copy Data Security Unit Type A      |
| Bluetooth Interface Type 3245       |
| Network Enhancement Kit Type 3010P  |
| VM Card Type B                      |

\*Option for Savin 8025ep/8030ep configurations.

[www.savin.com](http://www.savin.com)

Savin Five Dedrick Place, West Caldwell, NJ 07006

SAVIN® is a registered trademark of Ricoh Corporation. Windows® and Windows® 95/98/Me/NT4.0/2000/XP are registered trademarks of Microsoft Corporation. Macintosh®, Mac® OS and AppleTalk® are registered trademarks of Apple Computer, Inc. Adobe® and PostScript® are registered trademarks of Adobe Systems, Inc. PCL® is a registered trademark of Hewlett-Packard Company. RPCS® is a trademark of Ricoh Company, Ltd. All other trademarks are the property of their respective owners. Print speed may be affected by network, application or PC performance. Specifications and external appearances are subject to change without notice. Products are shown with optional features.

♻️ Printed in U.S.A. on recycled paper. S2254

