

SAVIN®

816/816f/816mf

Digital Imaging Systems

COMPACT > CONVENIENT > CAPABLE > PRODUCTIVE > **POWERFUL** >



**Complete document management
for the small office.**



The all-in-one system with the compact design.

The Savin 816 Series bundles big-system capabilities into a small footprint that can be the single answer to your document needs: B&W copying, printing and faxing, full-color scanning and advanced digital distribution.



The simplified control panel, featuring a 4-line, backlit display and directional cursor keys, allows quick, walkup access to all system capabilities.

Compact flexibility

Today you need the ability to communicate your ideas and manage your documents almost instantly in many different ways. The Savin 816 Series expands your capabilities, allowing you to handle virtually any document management task quickly and easily.

- Copy, scan and fax large documents such as booklets, brochures and over-sized pages with the legal-size platen.
- Scan your original documents just once, then go back to work while the Savin 816 Series produces all the copies you need.

Compact productivity

Getting more done in less time at a lower cost is one of the basic promises of the Savin 816 Series.

- 16 pages-per-minute output gives you the speed you need to finish your projects on time without waiting.

- Savin's Refined Print Command Stream (RPCS) print driver allows you to create fast, one-click print functionality for even the most complex print jobs.
- PDF Direct Print helps eliminate network congestion by quickly printing PDFs without opening the application.

Impressive cost savings

The Savin 816 Series is not only a valuable addition to your office or workgroup, but also a good investment that can help you minimize document costs.

- Eliminate the need to purchase and maintain up to four separate office devices and their supplies.
- Significantly reduce your paper usage, postage and hardcopy storage costs by being able to print both sides of your documents automatically.
- Reduce hard copy collation costs by automatically sorting copies.
- Produce copies, prints and faxes at a low copier cost/page.

Compact scanning power

Color scanning gives you the power to immediately scan and send brochures, business cards, photos or other important documents, maximizing the impact of your communications.

- Distribute scanned documents—in full color—directly to e-mail addresses through embedded Scan-to-E-mail, or to network folders via Scan-to-Folder, meeting tight deadlines faster and eliminating overnight delivery charges.
- LDAP support allows you to save time and prevent misdials by calling up fax numbers and e-mail addresses directly from your corporate address book.
- Protect your critical scanned documents with security features such as encrypted PDF transmission. Additional security, including User Authentication, ensures overall document protection by verifying the user's identity before allowing system access.



Legal-size platen expands your capabilities to copy, scan or fax large documents up to 8.5" x 14".

Compact faxing power

In most offices today, documents exist in both hardcopy and digital form. That's why you need the faxing power of the Savin 816 Series, which can handle incoming and outgoing documents of all types.

- Cut phone costs with Super G3 Faxing—you can send documents in as little as two seconds per page.
- Fax bound originals without having to create single-sided documents first, thanks to the platen-based design that allows you to scan and fax directly from the original.
- Protect your inbound/outbound faxes during power outages for up to 12 hours.
- Maximize your communications with advanced fax features such as LAN Fax, Internet Fax and IP Fax, which utilize the power of the Internet and your networks while lowering your costs.
- Improve document security and convenience by routing inbound faxes directly to designated e-mail addresses or network folders.

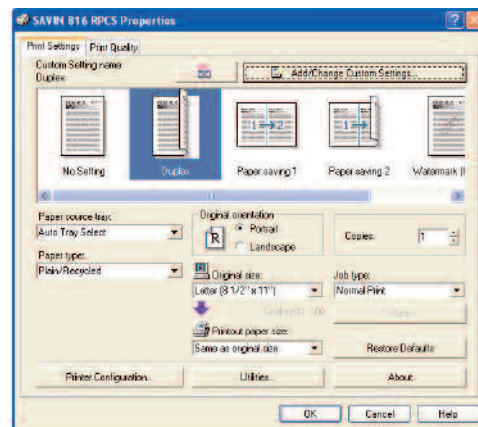
Scan-to-E-mail



Quickly scan your existing color brochures, photos and other documents up to 8.5" x 14" and send them instantly with Scan-to-E-mail or Scan-to-Folder.

816/816f/816mf Digital Imaging Systems

COMPACT > CONVENIENT > CAPABLE > PRODUCTIVE > **POWERFUL** >



Automatic duplexing

Automatic duplexing allows you to copy or print on both sides of a sheet of paper, literally cutting your paper costs in half.

Compact connectivity

Whether your office or workgroup is comprised of stand-alone or networked PCs, the Savin 816 Series includes all you need to connect.

- Connect directly to a stand-alone PC or to your network with either standard 10Base-T/100Base-TX Ethernet or USB 2.0 interfaces.
- Connect quickly to non-networked PCs using the optional IEEE 1284 parallel interface.
- Optimize placement flexibility and eliminate unsightly cables with either IEEE 802.11b Wireless LAN or Bluetooth™ connectivity options.
- Simplify printing with PCL5e/6 and optional Adobe® PostScript® 3™.

Compact device management

The Savin 816 Series allows you to manage almost every aspect of your document workflow right from your desktop.

- Conveniently access or change a single system's settings or view print job status from your desktop using Web Image Monitor.
- Manage all of your Savin networked resources with Web SmartDeviceMonitor.
- Send meter data automatically with the Savin @Remote, Intelligent Management System.

Your Environmental Partner

Savin continues its long-standing commitment to developing office solutions with environmentally friendly and superior energy- and supply-saving features, without compromising productivity, including:

- Quick Start-Up (QSU) Technology
- Power-saving Sleep Mode
- Duplex and Combine Copy Modes
- Toner Recycling
- Low Noise Levels
- Minimal Ozone Emissions
- Restriction of Hazardous Substances Compliant (RoHS)



Save time with the standard **50-sheet Automatic Reversing Document Feeder**.

Legal-size Platen accommodates documents up to 8.5" x 14".

Easy-to-use **Control Panel** provides quick access to all system capabilities.

Versatile **100-sheet capacity Bypass Tray** accepts a wide range of paper sizes and types, including envelopes.

250-sheet standard Paper Bank provides an ample supply of paper.

Optional **500-sheet capacity Paper Bank** accommodates up to 8.5" x 14" paper and boosts paper supply to 850 sheets, minimizing paper replenishment time.

Keep supplies handy in the optional spacious **Storage Cabinet**.



Functionality Overview



Savin 816

- Copying
- Printing (optional)
- Scanning (optional)



Savin 816f

- Copying
- Super G3 Faxing



Savin 816mf

- Copying
- Printing
- Scanning
- Super G3 Faxing
- Internet Faxing
- LAN Faxing
- IP Faxing

ENGINE/COPIER SPECIFICATIONS

Configuration	Console
Scanning Element	Flatbed with CCD Array Image Sensor
Printing Process	Laser Beam Scanning/Marking & Electrophotographic Printing
Toner	Dry, Dual Component
System Memory (std./max.)	16 MB/384 MB (816) 128 MB/128 MB (816f) 384 MB/384 MB (816mf)
Document Feeder	Standard 50-sheet ARDF
Copy Resolution	600 x 600 dpi
Grayscale	256 levels
Exposure Adjustment	Manual & Automatic
Quantity Indicator	Up to 99
Original Type	Sheet
Maximum Original Size	Up to 8.5" x 14"
Copy Size	Up to 8.5" x 14"
Copy Type	Plain Paper, Envelopes, Transparencies (through Bypass Tray)
Warm-Up Time	Less than 10 seconds (816) Less than 30 seconds (816f/816mf)
First Copy Speed	7.5 seconds or less
Continuous Copying Speed	16 cpm – Simplex 9 cpm – Simplex to Duplex
Recovery Time (from Auto Off)	Less than 10 seconds
Power Source	120 V/60 Hz
Dimensions (WxDxH)	19.09" x 17.72" x 19.33"
Weight	59.53 lbs. (816) 63.93 lbs. (816f/816mf)
Standard Paper Capacity	250 sheets x 1 Tray and 100-sheet Multi Bypass Tray
Optional Paper Capacity	500 sheets x 1 Tray
Paper Size	5.5" x 8.5" to 8.5" x 11" (Standard Tray) 5.5" x 8.5" to 8.5" x 14" (Bypass Tray) 8.5" x 11" to 8.5" x 14" (Duplex Unit)
Paper Weight	16 to 24 lb. Bond (Standard Tray) 16 to 42 lb. Bond (Bypass Tray) 20 to 24 lb. Bond (Duplex Unit)
Reduction Ratios	65%, 78%, 93%
Enlargement Ratios	129%, 155%
Zoom	50% to 200% in 1% increments
Standard Features	Auto Start, Combine Copy, Duplex Copying, Electronic Sort, Photo Mode, Series Copy (2 sided > 1 sided)

SCANNER SPECIFICATIONS

Scanning Speed	Embedded Scan-to-Email: 22 ipm @ 200 dpi B/W 9 ipm @ 200 dpi Color
Scanning Resolution	600 dpi
Grayscale	256 levels
Scan Area	8.5"/216 mm (Main) 14.02"/356 mm (Sub)
Scan Mode	Black & White: Text, Text/Line Art, Text/Photo, Photo, Grayscale Color: Full-color, Text/Photo, Glossy Photo
Standard Interfaces	10Base-T/100Base-TX
Optional Interfaces	IEEE 802.11b
Protocol	TCP/IP (Network) SMTP, POP3 (Sending E-mail) SMB, FTP, NCP (Scan-to-Folder)
Memory Capacity	384 MB Shared
File Formats	Single Page TIFF, PDF, JPEG Multi Page TIFF, PDF
Standard Features	Duplex Scanning, Embedded Scan-to-Email/Folder

PRINTER SPECIFICATIONS

Print Speed	16 ppm
CPU	RM5231A 400 MHz
Standard Interfaces	10Base-T/100Base-TX, USB 2.0
Optional Interfaces	IEEE 1284, IEEE 802.11b, Bluetooth™
Memory Capacity	384 MB Shared
Network Protocol	TCP/IP (IPv4, IPv6), IPX/SPX, AppleTalk
Network Operating Systems	Windows® 9x/2000/NT4.0/Me/XP/ Server 2003
Utilities	SmartDeviceMonitor™ Web SmartDeviceMonitor™ Web Image Monitor™ DeskTopBinder™ V5 Lite
Page Description Languages	RPCS™, PCL5e/6 (Standard), Adobe® PostScript®3™ (Optional)
Print Resolution	600 x 600 dpi, 300 x 300 dpi
Fonts for PCL 5e/6	35 Intelli fonts, 10 TrueType Fonts, 13 International Fonts
Fonts for PS3	136 Roman Fonts
Standard Features	Duplex Printing, Encryption/Encoding* Layout (N-Up), User Authentication*, User ID, Watermarks *RPCS and PCL only.

FAX SPECIFICATIONS

Circuit	PSTN, PBX
Compatibility	ITU-T G3
Resolution	200 x 100/200/400 dpi
Compression Method	MH, MR, MMR, JBIG
Scanning Speed	2.0 seconds (SEF)
Modem Speed	33.6Kbps with Auto Fallback
Transmission Speed	2 seconds (JBIG)
Memory	4 MB (320 pages)
Memory Backup	12 hours
Quick Dials	16 (out of 150 speed dials)
Speed Dials	150
Group Dials	10 (max. 100 numbers per group)
ID Code Programming	4 digits
User Function Key	3 keys
Standard Features	Dual Access, 12 Hour Backup, Serial Broadcasting

OPTIONS

PS480 (500 sheets x 1) Paper Bank

Paper Size	8.5" x 11" SEF, 8.5" x 14" SEF
Paper Weight	16 to 24 lb. Bond
Paper Capacity	1 x 500 sheets

Printer Scanner Unit Type 161

Bundled Software includes: DeskTopBinder™ V5 Lite

Adobe® PostScript®3™ Unit Type 161

IEEE 1284 Interface Board Type A

IEEE 802.11b Interface Unit Type H

Data Transmission Speeds	1/2/5.5/11 Mbps
Protocol	TCP/IP
Connection Types	Ad Hoc Mode Infrastructure Mode
Distance Between Devices	151 to 1,300 feet (140 to 400 meters)

Bluetooth™ Interface Unit Type 3245

Data Transmission Speeds	1 Mbps
Supported OS	Windows® XP, 2000, 98, SE, Me
Distance Between Devices	33 feet (10 meters)

Handset Type 1018

