

# Savin®

# CLP131DN

Color Laser Printer

POWER >

RELIABILITY >

INNOVATION >

VALUE >

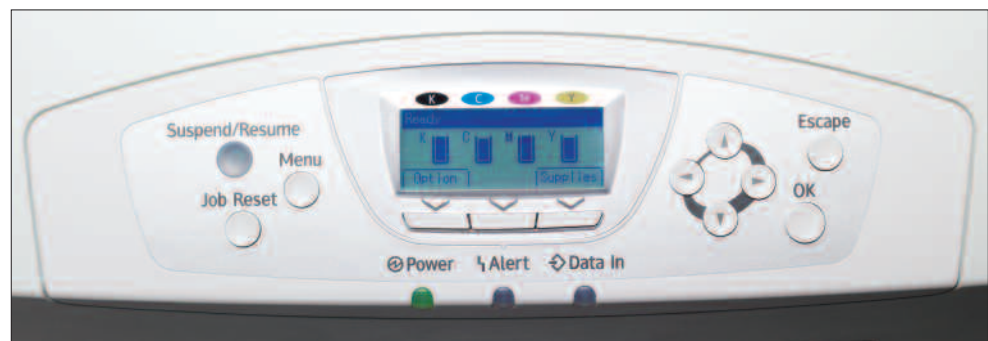
**DELIVER >**



**Compelling color with very low total cost of ownership.**

## The right choice for fast color and extraordinary value.

Built with a proven, award-winning color print engine, the SAVIN® CLP131DN Color Laser Printer delivers the amazing quality and reliability you expect — plus the technology you need to maximize productivity. That means higher paper capacity, dynamic paper handling and a powerful print controller. Plus, the highly affordable CLP131DN still offers the lowest cost per page in its class.



View supply levels at a glance, easily access menu functions and retrieve stored print jobs with the intuitive 4-line LCD.

### Increased Power and Performance

Equipped with an advanced print controller, the CLP131DN delivers an immediate improvement in color print productivity.

- Finish every color job faster. The CLP131DN prints 31 pages per minute in color and black & white, with image quality up to 1200 x 1200 dpi. Standard duplexing runs at nearly the same speed as simplex.
- Process complex documents more efficiently with the 800 MHz controller and standard 256 MB memory (512 MB maximum).
- Store frequently used files on the optional 60 GB hard drive for on-demand reprinting.
- Provide easy access for mobile users with optional IEEE 802.11a/g wireless connectivity.
- Print photos immediately without a PC\*. Just plug in any PictBridge™-enabled digital camera.
- Supports a variety of workflows with standard interfaces for Ethernet, USB 2.0 and USB Host Interface. Options include IEEE 1284, Bluetooth and Gigabit Ethernet.
- Add functionality in Microsoft Vista with the standard XPS Driver (available via Web download).

### Versatile Paper Handling

Expand the boundaries of color document creation with advanced paper-handling capabilities.

- Print large, full-color documents with support for paper sizes up to 8.5" x 14" through the standard 550-Sheet Paper Tray and 100-Sheet Bypass Tray. You can also print banners up to 8.5" x 35" through the Bypass Tray.
- Minimize reloading with up to three optional 550-Sheet Paper Feed Units, bringing total paper capacity to 2,300 sheets.
- Add color graphics to envelopes with reliable envelope feeding from all trays.

# CLP131DN Color Laser Printer

POWER > RELIABILITY > INNOVATION > VALUE > DELIVER >

Standard Integrated Duplexing

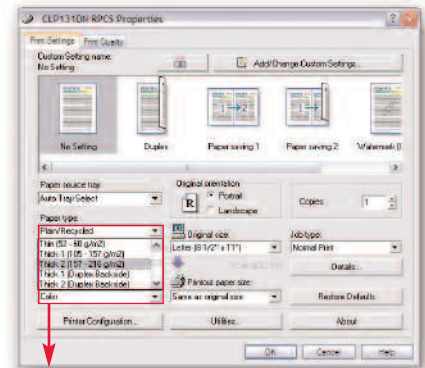
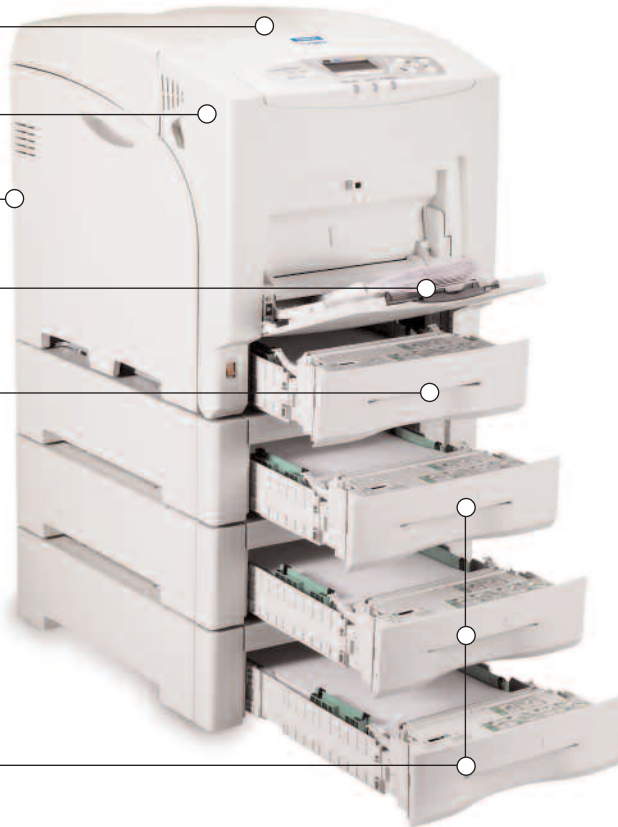
Top-Loading Design for Fast Toner Changeout

Standard USB 2.0, USB Host I/F and 10/100Base-T Ethernet

Standard 100-Sheet Bypass Tray

Standard 550-Sheet Paper Tray

Optional 3 x 550-Sheet Paper Feed Units (For a Total Paper Capacity of 2,300 Sheets)



Use the simplified print driver to select the right paper for any job. It shows a detailed list of available paper weights.



With the ability to print directly from PictBridge™-enabled digital cameras, you can print high-quality photos on the spot with the optional Camera Direct Print Card.

- Quickly print documents that require thick or unique paper. All trays accept paper weights up to 120 lb. Index and accommodate specialty stocks. A short, soft-curve paper path reduces the risk of misfeeds.
- Select the correct paper stock in seconds. Simplified print driver settings show the actual weight (in g/m<sup>2</sup>) of the paper in each drawer.

## Exceptional Ease of Use

The user-friendly CLP131DN is designed for simple, convenient color printing.

- Access menu options quickly with the streamlined control panel with 4-line LED, which also shows supply levels at a glance.
- Decrease maintenance time with high-yield consumables that are fast and easy to replace.
- Enjoy easy management. Administrators can receive e-mail alerts and use

Web Image Monitor to check network settings, usage details and supply status remotely.

- Avoid wasted paper with a suspend/resume button that instantly stops printing without resetting the job.
- Control printer access and protect sensitive data with multiple security features, including print data encryption, user authentication and data overwrite.

## High Reliability, Low TCO

Expect reliable performance from a solid color laser printer that is built to last.

- Handles higher print volumes than most competitors in its class.
- Produce eye-catching color quickly, for an extremely low total cost of ownership (TCO) driven by long-lasting, affordable supplies.

## Your Environmental Partner

Savin continues its long-standing commitment to developing office solutions with environmentally friendly and superior energy- and supply-saving features, without compromising productivity, including:

- Power-Saving Sleep Mode
- Duplex Mode
- Low Noise Levels
- Minimal Ozone Emissions
- Restriction of Hazardous Substances (RoHS) Compliant



## ENGINE SPECIFICATIONS

|                                      |  |
|--------------------------------------|--|
| Configuration Technology             | Desktop Laser-beam scanning, Electro-photographic, Dual component toner, 4 tandem drum method  |
| Resolution                           | 600 x 600 dpi (default); 1200 x 600 dpi; 1200 x 1200 dpi   |
| Printing Speed                       | 31 pages-per-minute in full-color and B&W  |
| First Print Speed                    | Color: 15 seconds; B&W: 10 seconds   |
| Dimensions (WxDxH)                   | 17.6" x 23.2" x 19.2" (446 mm x 589.5 mm x 487 mm)   |
| Weight                               | 110 lb. or less (50 kg)  |
| Warm-Up Time                         | Less than 30 seconds   |
| Power Source                         | 120V, 60Hz   |
| Maximum Power Consumption            | 990W or less   |
| Energy Saver Mode                    | 6W or less   |
| Maximum Paper Capacity               | Up to 2,300 sheets   |
| Standard Paper Capacity              | 550 sheets   |
| Bypass Tray                          | 100 sheets   |
| Optional Paper Feed Units            | 550 sheets (up to three paper feed units can be added)   |
| Automatic Duplex                     | Standard (prints at nearly 100% simplex speed through standard tray)   |
| Output Capacity                      | 500 sheets, face down  |
| Paper Sizes (All Sources)            | Letter (8.5" x 11"), A4 (8.3" x 11.7")<br>A5 (210 x 297 mm), EXE (7.25" x 10.5"), B5 (6.9" x 9.8"), Legal (8.5" x 14"), Custom Sizes:<br>Standard Paper Tray and Optional Paper Feed Units: (Width 3.9" – 8.5", Length 5.8" – 14")<br>Bypass Tray (Width 2.8" – 8.5", Length 5.5" – 35.4") |
| Paper Weight                         | 14 lb. – 57 lb. Bond /120 lb. Index (52 – 216 g/m <sup>2</sup> )   |
| Duplexing                            | 16 lb. – 43 lb. Bond/90 lb. Index (60 – 163 g/m <sup>2</sup> )   |
| Acceptable Paper Types (All Sources) | Thick paper/Card stock (Up to 57 lb. Bond/120 lb. Index/216 g/m <sup>2</sup> ), Plain Paper/Recycled Paper, Laser Printer Qualified Transparencies, Envelopes (Com 10, Monarch, C6, C5, DL)  |
| Safety Regulations                   | UL UL60950, FCC Part15 Class B device, Energy Star Tier 2 compliant  |

## CONTROLLER SPECIFICATIONS

|                     |  |
|---------------------|--|
| CPU                 | PMC-Sierra RM7935-835L 800 MHz   |
| Printer Languages   | Adobe PostScript3, PCL 5c, PCL 6, Savin RPCS, PDF Direct, PictBridge™ (optional) |
| Fonts               | 136 PostScript 3 fonts, 45 PCL fonts, 13 International fonts                     |
| Memory (RAM)        | 256 MB RAM standard; 512 MB RAM maximum  |
| Hard Disk Drive     | 60 GB (optional) (40 GB of HDD is dedicated to file storage)                     |
| Standard Interfaces | 10/100Base-TX Ethernet, USB 2.0, USB Host I/F                                    |

## CONTROLLER SPECIFICATIONS (Cont.)

|                     |   |
|---------------------|---|
| Optional Interfaces | IEEE 1284, IEEE 802.11a/g Wireless LAN, Bluetooth Wireless, Gigabit Ethernet  |
| Network Protocols   | Simultaneous auto-sensing/auto switching TCP/IP, Novell IPX/SPX, AppleTalk  |
| Operating Systems   | Windows 2000/XP/Server 2003/Vista; NetWare v 3.12, 3.2, 4.1, 4.11, 5.0, 5.1, 6, 6.5; Macintosh OS 8.6 – 9.2x, OS X 10.1, 10.2, 10.3 or later; UNIX (using Savin UNIX filter Phase 11) Sun Solaris, HP-UX, Red Hat Linux, SCO Open Server, IBM AIX (for UNIX support, visit <a href="http://www.savin.com/downloads">www.savin.com/downloads</a> ); SAP R/3 3.x or later |
| Drivers             | RPCS/PCL 5c/PCL 6: Windows 2000/XP/Server 2003/Vista<br>XPS: Windows Vista (via download only)<br>PS: Windows 2000/XP/Server 2003/Vista; Mac OS 8.6 – 9.2x, OS X 10.1 or later; UNIX: Sun Solaris, HP-UX, Red Hat Linux, SCO OpenServer, IBM AIX  |
| Print Utilities     | SmartDeviceMonitor for Admin, Web SmartDeviceMonitor, Web Image Monitor, DeskTopBinder V2 Lite, Printer Utility for Mac, Agfa Font Manager 2000, DeskTopBinder Professional (optional)  |

## CONTROLLER OPTIONS

|  |
|--|
| 60 GB Hard Disk Drive Type 420   |
| IEEE 1284 Interface Board Type A   |
| IEEE 802.11a/g Interface Unit Type L   |
| Bluetooth Interface Unit Type 3245   |
| Gigabit Ethernet Board Type A  |
| Data Storage Card Type A   |
| VM Card Type H   |
| Device Customization: VM Card for Java-based device SDK option                 |
| Camera Direct Print Card (SD Card) Type D                                      |
| Enables direct printing from a PictBridge-enabled digital camera, without a PC |

## MEMORY OPTIONS

|   |
|---|
| 128 MB Memory Unit Type G                             |
| 256 MB Memory Unit Type G                             |
| 144-pin DIMM SD-RAM (PC133 Compliant); Maximum 512 MB |

## SECURITY OPTIONS

|   |
|---|
| <b>DataOverwriteSecurity System (DOSS) Type K (Optional):</b>         |
| Overwrites latent data on the system's hard drive after print jobs    |
| <b>HDD Encryption Unit Type C (Optional):</b>                         |
| Encrypts data stored in the device's NVRAM and on the Hard Disk Drive |

## OTHER SECURITY FEATURES

SNMP v3 Authentication and Data Encryption (password/address book encryption); Print Data Encryption via Internet Printing Protocol (IPP); PDF Direct Print Password Protection; Locked (Secure) Print; 500 User Account Codes; User Authentication; WPA (Wi-Fi Protect Access Support)

## PAPER HANDLING ACCESSORIES

|                      |  |
|----------------------|--|
| Paper Feed Unit Type | 4000   |
| Paper Size           | Letter (8.5" x 11"), A4 (8.3" x 11.7"), A5 (210 x 297 mm), EXE (7.25" x 10.5"), B5 (6.9" x 9.8"), Legal (8.5" x 14"), Custom: Width 3.9" – 8.5", Length 5.8" – 14" |
| Free Paper Weights   | 14 – 57 lb. Bond/120 lb. Index (52 – 216 g/m <sup>2</sup> )  |
| Capacity             | 550 sheets; up to 3 units may be added   |
| Printer Stand        | FAC29  |

## CONSUMABLES

|  |                      |
|--|----------------------|
| HY Black Toner Cartridge                                 | Yield: 15,000 pages* |
| HY Yellow Toner Cartridge                                | Yield: 15,000 pages* |
| HY Magenta Toner Cartridge                               | Yield: 15,000 pages* |
| HY Cyan Toner Cartridge                                  | Yield: 15,000 pages* |
| Photoconductor Unit Black                                | Yield: 50,000 pages  |
| Photoconductor Unit Color                                | Yield: 50,000 pages  |
| Waste Toner Bottle                                       | Yield: 50,000 pages  |
| Intermediate Transfer Unit                               | Yield: 100,000 pages |
| Maintenance Kit (Type C411)                              | Yield: 100,000 pages |
| Includes Fusing Unit, Transfer Roller, Paper Feed Roller |                      |
| Paper Feed Roller for 3rd Paper Feed Unit                | Yield: 100,000 pages |

\*Declared yield value in accordance with ISO/IEC 19798. The CLP131DN ships with starter toner cartridges that yield 3,000 pages; all other consumables ship at full yield.

For maximum performance and yield, we recommend using genuine Savin parts and supplies.

Specifications subject to change without notice.