

SAVIN®

CLP350D

Color Laser Printer

FAST >

VIVID >

VERSATILE >

RELIABLE >

UNIVERSAL >



A flexible, efficient system for high-end color printing.



Smart, Efficient, Flexible Color

The fast and flexible SAVIN® CLP350D Series Color Laser Printer delivers exactly what marketing departments, advertising agencies and other graphics-intensive environments need to produce more full-color documents in-house and find smarter, more effective ways to handle color workloads. This versatile system prints anything and everything: pre-proofs, comps, presentations, booklets, brochures, expense reports, forms, and more. Its superior speed lets you pick up the pace, while its outstanding color quality ensures attention-grabbing output. Bottom line: the Savin CLP350D Series puts the power back in your hands, enabling you to maintain complete control over image quality, turnaround time, operating costs and productivity.

Astonishing Full-Color Results

Expect amazing results from the Savin CLP350D Series. Its multi-bit printer engine uses true laser technology to easily outperform competitive systems.

- Achieve maximum clarity and sharpness for photographic-quality prints and smoother gradations. This printer offers true 1200 x 1200 dpi resolution which many other printers in this class simply can't match.
- Choose the right resolution for any color document. With 4-bit color and interpolated resolution up to 9600 x 600 dpi, it is easy to optimize color quality for shadow detail and skin tones.
- Print sharp, crisp photographic-quality documents quickly and easily with Glossy Mode.
- Emulate the look of output from other devices, including offset printers and popular laser printers. Plus, support for PANTONE®, ColorSync, ICM and custom ICC profiles provides even more control over your prints.

- Sharpen images with new PxP™ toner. Its wider color gamut and smaller particles enable the Savin CLP350D Series to capture subtle changes in color and tone.

Increase Speed and Performance

The Savin CLP350D Series uses a powerful combination of print speed, faster processing and enhanced memory to set a new standard for full-color productivity.

- Create reports, plans, presentations, brochures, and more with 50 pages-per-minute speed for full-color, black & white or mixed output.
- Handle larger file sizes, complex applications, specialized fonts and other graphics-intensive demands with a high-performance 1 GHz Intel Celeron® Controller.
- Enable instant reprints and other convenient print-on-demand capabilities while increasing font storage space with a standard 80 GB Hard Disk Drive (HDD).

- Minimize waiting with a first color print time of eight seconds, or seven seconds for black & white. Warm-up time is less than a minute.
- Let everyone share a single device without constantly reloading paper. This printer holds up to 3,200 sheets for demanding workloads.
- Reduce the risk of misplaced output. The 4-Bin Mailbox provides shared access to the printer while keeping documents separate.

More Media Choices

Outstanding media flexibility enables you to keep a wider variety of jobs in-house and express your creativity without limits.

- Print postcards, direct mail and other documents on heavy stock. All paper trays accept weights up to 140 lb. Index in simplex mode and 90 lb. Index in duplex mode.
- Print packaging comps and proof sheets up to 11" x 17". For full-bleed 11" x 17" proofs, use the Bypass Tray, which prints sizes up to 12" x 18".

- Energize event promotions with full-color banners. The Savin CLP350D Series can print banners 12" wide and up to 49.6" long.
- Reduce the risk of errors and reprints with a convenient driver that lets users select the correct paper weight for any job.

Powerful In-Line Finishing

Professional-grade finishing options exponentially increase the number of documents you can print in-house for much less than the cost of outsourcing.

- Produce high-impact, full-color training, education and marketing materials with folding and saddle-stitching using the 1,000-Sheet Booklet Finisher.
- Staple reports, plans and proposals with the 3,000-Sheet Finisher. Add the Hole Punch Unit so output can be inserted directly into three-ring binders.
- Align finished documents for easy pick-up with the optional Output Jogger Unit, which can be added to the 3,000-Sheet Finisher.

Improve Security and Management

Sophisticated security features provide a multi-layered defense for sensitive documents, while device management tools streamline administrative tasks.

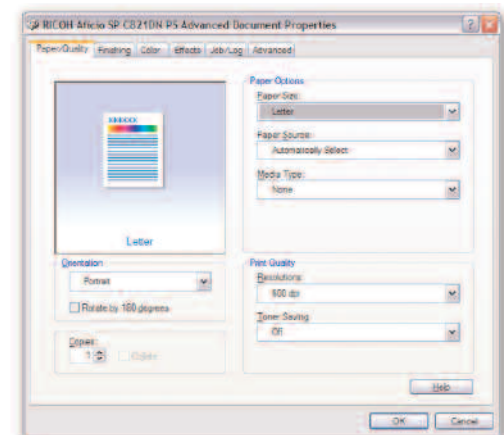
- Ensure accountability for every color page you print. Precise job tracking supports accurate chargeback and billing.
- Protect confidential documents even if the hard drive is stolen with the optional DataOverwriteSecurity System (DOSS). It overwrites latent data on the hard drive after every job.
- Strengthen information security with an HDD encryption option that makes it virtually impossible for hackers to gain access to stored files.
- Make printer management much more convenient with instant e-mail alerts for administrators when the printer runs low on supplies or an error occurs.
- Produce detailed activity reports and submit meter reads automatically with @Remote Intelligent Remote Management System.

1200 x 1200 dpi Quality



The Savin CLP350D Series delivers true 1200 x 1200 dpi resolution for exceptional sharpness, clarity and color quality.

Genuine Adobe® PostScript® Driver



Take full advantage of available print settings with an intuitive graphical user interface for the PostScript® driver.

4-Bin Mailbox (Optional)

Keep documents from multiple users separate with the 4-Bin Mailbox.

Output Jogger Unit (Optional)

Available with the 3,000-Sheet Finisher, the Output Jogger Unit offsets finished documents for fast and easy retrieval.

1,000-Sheet Booklet Finisher (Optional)

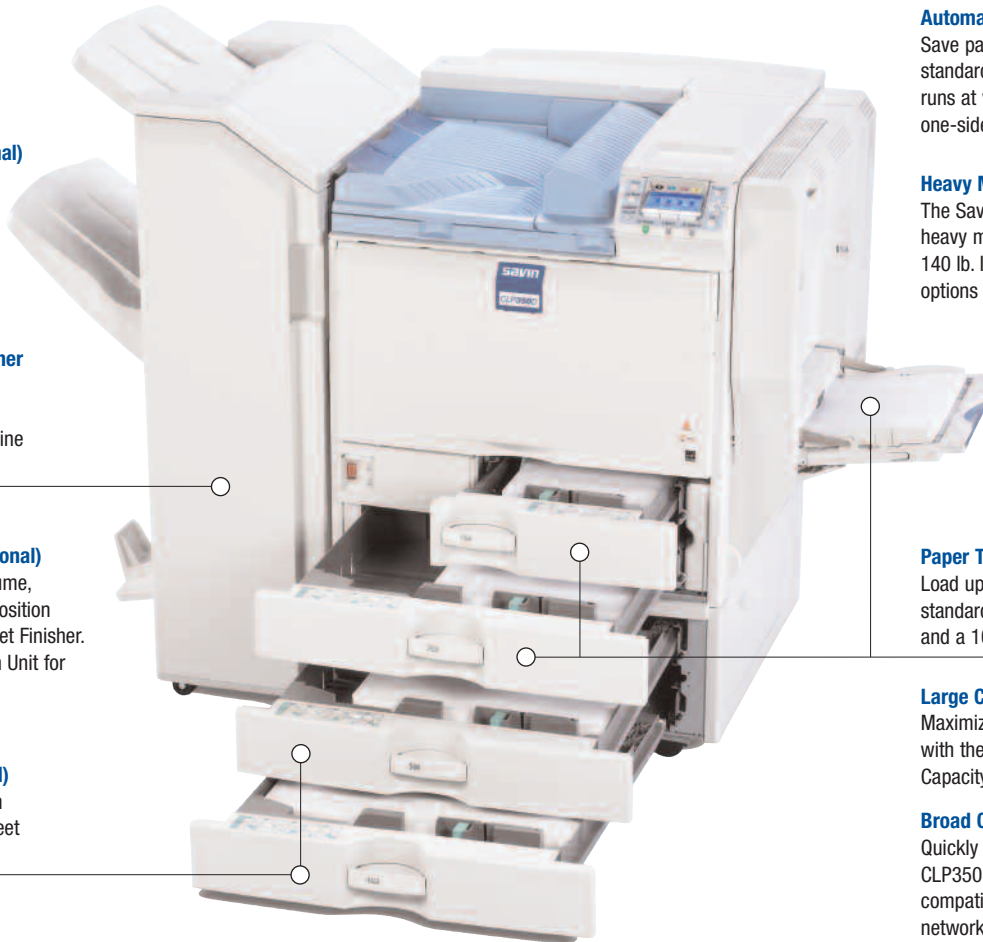
Produce full-color booklets cost-effectively with the in-line Booklet Finisher.

3,000-Sheet Finisher (Optional)

Take advantage of high-volume, professional-quality, multi-position stapling with the 3,000-Sheet Finisher. Add the optional Hole Punch Unit for even more flexibility.

Paper Feed Units (Optional)

Add up to 1,100 sheets with one or two optional 550-Sheet Paper Feed Units.



Automatic Duplexing (Standard)

Save paper and filing space with standard automatic duplexing that runs at virtually the same speed as one-sided output.

Heavy Media Support

The Savin CLP350D Series accepts heavy media (up to 68 lb. Bond/140 lb. Index) to give you many more options for in-house production.

Easy Maintenance

Maximize productivity with supplies that are easy for any user to replace.

Paper Trays (Standard)

Load up to 1,200 sheets with two standard 550-Sheet Paper Trays and a 100-Sheet Bypass Tray.





Large Capacity Tray (Optional)

Maximize total paper capacity with the 2,000-Sheet Large Capacity Tray.

Broad Compatibility

Quickly integrate the Savin CLP350D Series with built-in compatibility for PC and Macintosh network environments.

Savin CLP350D Series Configurations

	 CLP350D* Shown with optional FAC33 Cabinet Stand	 CLP350DT1* Shown with optional FAC35 Stand	 CLP350D Shown with optional 2 x 550-Sheet Paper Feed Units	 CLP350D Shown with optional Large Capacity Tray
CPU	1 GHz			
RAM	512 MB	512 MB	512 MB	512 MB
HDD	80 GB (standard)			
Standard Connectivity	10/100Base-TX Ethernet, USB 2.0, USB Host Interface			
Optional Connectivity (Select One)	Gigabit Ethernet, IEEE 802.11a/b/g Wireless LAN, Bluetooth Wireless, IEEE 1284 Parallel			
Duplexing	Standard			
Standard Paper Supply	2 x 550-Sheet Tray + 100-Sheet Bypass Tray = 1,200 sheets (3 sources)	3 x 550-Sheet Tray + 100-Sheet Bypass Tray = 1,750 sheets (4 sources)	4 x 550-Sheet Tray + 100-Sheet Bypass Tray = 2,300 sheets (5 sources)	2 x 550-Sheet Tray + 100-Sheet Bypass Tray + 2,000-Sheet LCT = 3,200 sheets (4 sources)
Finishing Options**	3,000-Sheet Finisher or 1,000-Sheet Booklet Finisher and/or 4-Bin Mailbox*** *Available as a pre-configured model. **May require configuration with a cabinet or paper supply option. Bridge Unit required for the installation of both Finishers. ***4-Bin Mailbox can only be configured with the 2 x 550 PFU or LCT configurations.			

ENGINE SPECIFICATIONS

Configuration Technology	Desktop Laser-beam scanning & electrophotographic printing with dual component toner development, 4-drum tandem method
Printing Speed	50-ppm black & white and full-color
Warm-Up Time	50 seconds
First Print Speed	Black & white: 7 seconds or less Full-color: 8 seconds or less
Duplex Print Speed	Near 100% productivity for all paper sizes
Print Resolution	600 x 600-dpi (1-bit) 600 x 600-dpi (2-bit) (Default) 600 x 600-dpi (4-bit) 1200 x 1200 dpi (1-bit)
Standard Input Capacity	CLP350D (Base): 2 x 550 sheets + 100-Sheet Bypass Tray* CLP350DT1**: 3 x 550 sheets + 100-Sheet Bypass Tray

Maximum Paper Capacity: 3,200 Sheets when Base model is configured with optional LCT.
*Can be configured with 550 x 1 Paper Feed Unit; 550 x 2 Paper Feed Unit, Large Capacity Tray or FAC33 Large Cabinet Stand.
**Can be configured with 550 x 2 Paper Feed Unit or FAC35 Stand.

Output Capacity	Standard: 500 sheets face down Optional: 3,000-Sheet Finisher, 1,000-Sheet Booklet Finisher or 4-Bin Mailbox Maximum: 4,000-sheet stack capacity (with 3,000-Sheet Finisher and 4-Bin Mailbox)
-----------------	------------------------------------------------------------------------------------------------------------------------------------------------------------------------------------------------------

Paper Sizes	First Paper Tray: 8.5" x 11" Second Paper Tray: 7.17" x 5.83" – 11" x 17" Bypass Tray: Width: 3.5" – 12", Length: 5.8" x 47.6" Optional Large Capacity Tray: 8.5" x 11" Optional Paper Feed Units: 7.17" x 5.83" – 11" x 17"
-------------	------------------------------------------------------------------------------------------------------------------------------------------------------------------------------------------------------------------------------------------

Paper Weights	Standard & Optional Paper Feed Units, Large Capacity Tray: 16 – 68 lb. Bond/140 lb. Index (60 – 256 g/m ²) Bypass Tray: 16 – 68 lb. Bond/140 lb. Index (60 – 256 g/m ²) (Source for Labels, OHP, and Envelopes) Duplex Unit: 16 – 45 lb. Bond/90 lb. Index (60 – 169 g/m ²)
---------------	-----------------------------------------------------------------------------------------------------------------------------------------------------------------------------------------------------------------------------------------------------------------------------------------------------------------------

Paper Types	Bond, Plain, Recycled, Preprinted, Special, Color, Letterhead, Card Stock, Glossy, Coated, Labels, OHPs and Envelopes
Auto Duplex	Standard
Dimensions (WxDxH) (Base Model)	26.4" x 26.4" x 25.2" (670 x 670 x 640 mm) (Standard Configuration)
Weight (Base Model)	Less than 213 lb. (97 kg)
Power Requirements	120V, 60Hz
Operating Power Consumption	992W
Maximum Power Consumption	1440W
Energy Saver	2.2W

PRINTER CONTROLLER SPECIFICATIONS (STANDARD)

CPU	Intel Celeron M @ 1GHz
Memory	Base/T1 Configurations: Standard 512 MB RAM/Maximum 1,024 MB RAM
Hard Disk Drive	80 GB HDD Standard on all models
Printer Languages	PCL 5c, PCL 6, RPCS, Adobe® PostScript® 3™, PDF Direct Print
Fonts	Standard: 45 PCL fonts, 13 International fonts, 136 PostScript 3 fonts Optional: OCR and Barcode fonts available
Standard Interfaces	10/100Base-TX Ethernet (RJ-45), USB 2.0, USB Host I/F
Optional Interfaces*	IEEE 1284 Interface Board Type A IEEE 802.11a/bg Wireless LAN Type J Bluetooth Wireless Interface Type 3245 Gigabit Ethernet Board Type B

*Only one additional interface can be installed.

Network Protocols	Standard: TCP/IP (IPv4, IPv6), SMB, AppleTalk Optional: IPX/SPX
Operating Systems	Windows 2000/XP/Server 2003/Server 2008*/Vista; Novell NetWare 3.12, 3.2, 4.1, 4.11, 5.0, 5.1, 6, 6.5; UNIX (using Savin UNIX filter Phase 11); Sun Solaris, HP-UX, SCO OpenServer, RedHat Linux, and IBM AIX; Citrix Metaframe, Mac OS 8.6 – 9.2x, OS X 10.1 or later; SAP R/3 3.x or later RPCS, PCL5c, PCL6: Windows 2000/XP/Server 2003/Vista/Server 2008 XPS: Windows Vista/Server 2008 PostScript: Windows 2000/XP/Server 2003/Vista/Server 2008, Macintosh 8.6 or later, OS X (v. 10.1, 10.2, 10.3)
Drivers	SmartDeviceMonitor for Admin and Client; Web SmartDeviceMonitor (Optional); Web Image Monitor; DeskTopBinder V2 Lite; Print Utility for Mac; Agfa Font Manager 2000
Utilities	

CONTROLLER OPTIONS

Camera Direct Print Card Type F – Enables direct printing from a PictBridge™ enabled digital camera, without a PC.

VM Card Type K for ESA™

BB-HPL10A-R HD-PLC Ethernet Adaptor

Network Card Type A

Memory Options

Memory Unit Type J 256 MB RAM

Memory Unit Type J 512 MB RAM

SECURITY FEATURES

DataOverwriteSecurity System Type M (Optional) – Security feature that overwrites latent data on the system's hard drive after scan and print jobs

HDD Encryption Unit Type D (Optional) – Encrypts data on HDD, so data is secure even if HDD is stolen

Other Security Features

Network Protocols ON/OFF, Administrator Authentication, Job Log/Job Access, IP Address Filtering, User Account Registration, User Authentication, Wi-Fi Protect Access (WPA), Kerberos, 802.1X Wired Authentication, 128-bit Secure Socket Layer, SNMP v3 Encryption, IPsec Communication, Locked Print Password Encryption, Unauthorized Copy Control and Mask Type for Copying

HARDWARE ACCESSORIES

Two-Tray Paper Feed Unit (PB3040)

Paper Capacity	1,100 sheets (550 x 2)
Paper Sizes	7.17" x 5.83" – 11" x 17"
Paper Weights	16 – 68 lb. Bond/140 lb. Index (60 – 256 g/m ²)

One-Tray Paper Feed Unit (PB3080)

Paper Capacity	550 sheets (550 x 1)
Paper Sizes	7.17" x 5.83" – 11" x 17"
Paper Weights	16 – 68 lb. Bond/140 lb. Index (60 – 256 g/m ²)

Large Capacity Tray (LCT) (PB3050)

Paper Capacity	2,000 sheets (1,000 x 2)
Paper Sizes	8.5" x 11" LEF
Paper Weights	16 – 68 lb. Bond/140 lb. Index (60 – 256 g/m ²)

FAC33 Cabinet Stand (Large)

Note: The Cabinet Stand or a paper supply option must be selected for Base Model installation when the printer is to be configured with a Finisher.

FAC35 Stand (Small)

Note: The Stand must be selected for the CLP350DT1 installation when the printer is to be configured with a Finisher.

3,000-Sheet Finisher (SR3030)*

Paper Sizes	5.5" x 8.5" – 11" x 17", 12" x 18"
Paper Weights	Proof Tray: 14 – 43 lb. Bond/90 lb. Index (52 – 163 g/m ²); Shift Tray: 14 – 68 lb. Bond/140 lb. Index (52 – 256 g/m ²) Stack Capacity Proof Tray: 250 sheets (8.5" x 11" or smaller), 50 sheets (8.5" x 14" or larger); Shift Tray: 3,000 sheets (8.5" x 11" LEF), 1,500 sheets (8.5" x 11" SEF, 8.5" x 14", 11" x 17", 12" x 18"), 100 sheets (5.5" x 8.5")

Staple Capacity	50 sheets (8.5" x 11" SEF), 30 sheets (8.5" x 14" or larger, 8.5" x 11" LEF)
Staple Paper Sizes	8.5" x 11" – 11" x 17"
Staple Paper Weights	17 – 24 lb. Bond (64 – 90 g/m ²)
Staple Positions	1 staple/3 positions; 2 staples/1 position

SR3030 Finisher Options

2/3-Hole Punch Unit Type 3260

Jogger Unit Type 3260

*Requires Bridge Unit BU3030.

1,000-Sheet Booklet Finisher (SR3000)*

Paper Sizes	5.5" x 8.5" – 11" x 17", 12" x 18"
Paper Weights	Upper Proof Tray: 14 – 28 lb. Bond (52 – 105 g/m ²); Shift Tray: 14 – 68 lb. Bond/140 lb. Index (52 – 256 g/m ²) Upper Proof Tray: 100 sheets (8.5" x 11" or smaller), 50 sheets (8.5" x 14" or larger); Shift Tray: 1,000 sheets (8.5" x 11"), 500 sheets (8.5" x 14" or larger, 8.5" x 11" LEF), 100 sheets (5.5" x 8.5"); Booklet Tray: 20 sets (2 – 5 sheets/set, all sizes, saddle-stitched) or 10 sets (6 – 10 sheets/set, all sizes, saddle-stitched)

Stack Capacity

Staple Capacity

Staple Paper Sizes	8.5" x 11" to 11" x 17" (Normal Staple) 8.5" x 11", 8.5" x 14", 11" x 17" (Saddle Stitch)
--------------------	----------------------------------------------------------------------------------------------

Staple Paper Weights

17 – 24 lb. Bond (64 – 90 g/m²)

Staple Positions

1 staple/2 positions; 2 staples/1 position

SR3000 Finisher Options

2/3-Hole Punch Unit Type PU300

*Requires Bridge Unit BU3030.

4-Bin Mailbox Type C820*

Number of Bins	4
Capacity Per Bin	125 sheets
Paper Size	5.5" x 8.5" to 11" x 17"
Paper Weight	16 – 34 lb. Bond (60 – 128 g/m ²)

*Can be installed simultaneously with both the 1,000-Sheet Booklet Finisher and 3,000-Sheet Finisher.
Must be installed with either the PB3040 or the PB3050 LCT.

SUPPLIES

Consumables	Yield
Black Toner ¹	20,000 pages @ 5%
Yellow Toner ¹	15,000 pages @ 5%
Magenta Toner ¹	15,000 pages @ 5%
Cyan Toner ¹	15,000 pages @ 5%
Photoconductor Unit Black	40,000 pages
Photoconductor Unit ² Color	40,000 pages
Waste Toner Bottle	40,000 pages
Intermediate Transfer Unit ³	160,000 pages
Fusing Unit ³	120,000 pages

¹Based on A4 letter 5% test chart; 3 pages/job; Cyan, Magenta and Yellow (color printing only).

²Based on A4 letter 5% test chart; 3 pages/job; Color Drum Unit (color printing only).

³Based on A4 letter 5% test chart; 3 pages/job.

CLP350D and CLP350DT1 ship with starter toner cartridges that yield 10,000 pages for Black and 8,000 pages for each Color @ 5% coverage.

For maximum performance and yield, we recommend using genuine Savin parts and supplies.

Specifications subject to change without notice.

PANTONE® SUPPORT

PANTONE Profiles and Look-up Tables will be available in Summer, 2009.

WARRANTY

The Savin CLP350D Series is under warranty against defects for a period of one year from the date of purchase. Consumables are under warranty for a period of 90 days from the date of purchase or until depleted, whichever ever comes first. Please refer to warranty document shipped with the product for more details.

Bringing Savin Value to Your Organization

Savin technology offers a diverse portfolio of solutions to help your organization stay competitive and move ahead. Let Savin show you how to empower your business to improve critical processes, keep information secure, ensure compliance and promote environmental sustainability while reducing the total cost of ownership.

Savin Five Dedrick Place, West Caldwell, NJ 07006

SAVIN® is a registered trademark of Ricoh Americas Corporation. All other trademarks are the property of their respective owners. Print speed may be affected by network, application or PC performance. Specifications and external appearances are subject to change without notice. Products are shown with optional features.

