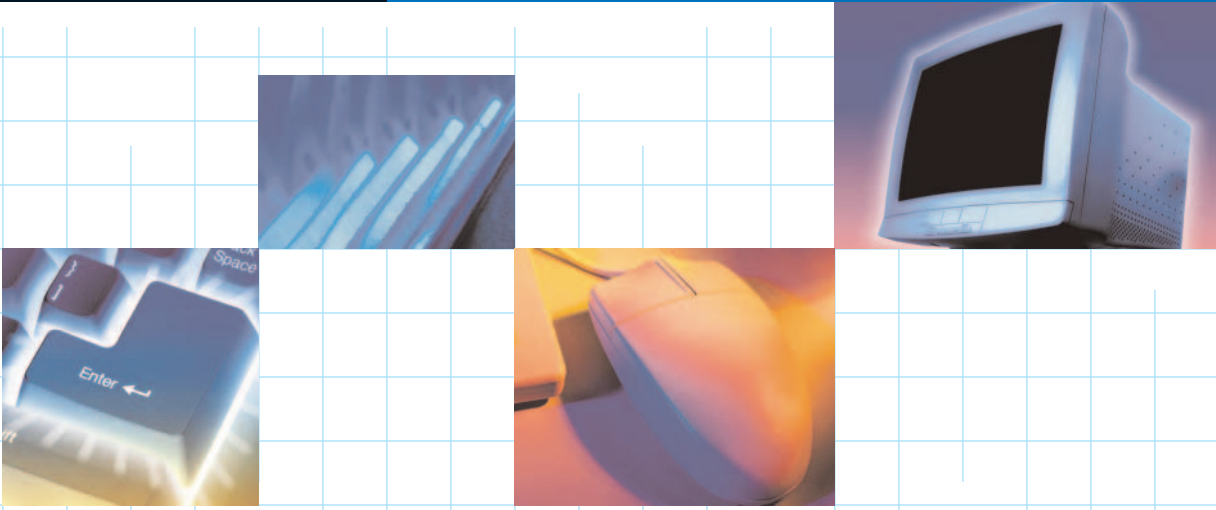


MLP45

> NETWORK LASER PRINTER



MLP45



Savin®

The MLP45 Leaves The

Wait until you put the Savin MLP45 network printer through its paces! A skillful blend of high octane performance, sleek paper handling capabilities and smooth network integration enables the Savin MLP45 to effortlessly keep pace with even the most supercharged workgroup environments. If you have a need for speed, you won't find a better choice than the MLP45 – just consider it a shot of pure adrenaline on your network.



FEATURES

- > 45 PPM print speed
- > diverse paper handling options offer convenience and flexibility
- > manage printing anywhere on the network from your desktop
- > 3,550-sheet paper capacity
- > create professionally finished manuals and booklets
- > 600 dpi resolution

Wanna' Race?

Who says you can't have fun with your network printer? The Savin MLP45 simply smokes the competition!

- One-sided, two-sided...doesn't make a bit of difference to the MLP45; you're always getting "best-in-class" 45 PPM, 600 dpi throughput.
- Coming up to full speed is not a problem for the MLP45. With Quick Start-Up (QSU) technology, you'll be printing in no time flat from a cold start.

The Speedy Connection

When it leaves the box, the Savin MLP45 is ready for your network.

- Connect to your LAN with a built-in Fast Ethernet interface for distributed printing throughout today's most popular computing environments. Or, if you prefer, select the IEEE 1394 Interface for data transmission speeds of up to 400 Mbps.
- Power through print jobs without straining your network thanks to the MLP45's super fast processor, 64 Bit ASIC technology and multiple original set printing.

- Make everyone in your office happy with print drivers that assure compatibility with an array of business and graphics software applications. Users have instant access to a wide selection of standard Windows compatible and Adobe Type 1 fonts, and an optional hard disk drive is available for local font storage.

Expert Navigation

Now this is the way a print driver should work! Refined Print Command Stream (RPCS) is an exclusive driver optimized for Windows clients, which means better performance in every way.

- High speed processing of sophisticated graphics files ensures maximum throughput speeds.

- An elegant Comprehensive Driver Interface provides users with easy access to all of the MLP45's output capabilities – including finishing and duplexing – directly from the desktop.

- Dynamic graphic icons – preset or user-specified – simplify the print process by allowing users to apply settings with just one click.

Team Management

Network printer management should be a collaborative effort between network administrators and network clients. SmartNetMonitor is your assurance that everyone clicks on all cylinders.

- Unlike some other printer management utilities, SmartNetMonitor ships with two software components: SmartNetMonitor for Admin provides all the necessary tools for easy installation and system management for network administrators.

SmartNetMonitor for Client allows users to visually monitor the status of networked MLP45s – information that includes system configuration, system status,

Others In The Dust.



toner levels and paper supplies – via an icon located on the Windows Taskbar.

- Gain advanced network printing functionality with Recovery Printing and Parallel Printing. Recovery Printing enables users to shift print jobs to another networked MLP45 in the event the first system is unable to complete a print job. Parallel Printing allows users to send large jobs to multiple networked MLP45s, which dramatically increases output productivity.

Crossing The Finish Line

Ever notice how some network printers let you down in the end? With the Savin MLP45, your jobs always have a professional finish.

- Take your best ideas and output them on a variety of paper types and sizes. With up to six different available paper sources and a maximum paper capacity of 3,550 sheets, you'll sail through even the longest print runs. Plus, the MLP45 is so smart, it automatically finds and pulls the correct paper – no more mistakes.

- Speaking of no more mistakes, Proof Printing lets you check your jobs before you commit to multiple sets, which is a great way to eliminate "office rage"!

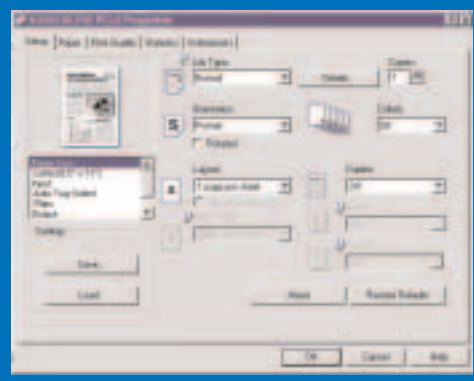
- Create professional manuals and booklets by stapling output in a variety of positions. You can even 3-hole punch documents for easy inclusion into existing notebooks.

- Stop rifling through stacks of print output looking for your job! Add the dedicated mailbox option and up to nine individuals – or departments – can direct print output to specific bin locations. For maximum output flexibility and productivity, install the dedicated mailbox with the finisher option and increase your total output capacity to an incredible 4,900 sheets.

Take It Out For A Spin

Once you do, you'll agree that the Savin MLP45 is the gold standard when it comes to workgroup printing productivity and versatility. And, you'll know why our competitors are understandably upset!

For more information about the Savin MLP45 Network Printer, contact your authorized Savin sales location.



Familiar print drivers make it easy to set-up and preview print jobs – ensuring consistently correct output.



Configure the MLP45 to meet your specific needs. Choose a dedicated mailbox, finisher and a variety of paper supply options.

Savin MLP45

Savin MLP45

ENGINE

Configuration Technology	Desk Top Laser Beam Scanning and Electrophotographic Printing
Toner	Dry, Dual Component
Resolution	300/600 dpi with Edge Smoothing (1200 dpi)
Warm-Up Time	22 Seconds or Less
Continuous Print Speed	45 PPM (Letter Size)
First Print Speed	5.9 Seconds or Less
Hard Disk Drive	10 GB (optional)
Operation Panel	LCD, 16 Characters x 2 Lines
Dimensions (WxDxH)	26.4" x 25.2" x 22.0" (Includes Duplex Unit and Bypass Tray)
Weight	138.9 lbs.

PAPER HANDLING

Input Capacity (Standard)	Dual 500 Sheet Front Loading User Adjustable Trays; 50 Sheet Bypass
Input Capacity (Optional)	Dual 500 Sheet Front Loading User Adjustable Trays
Input Capacity (Maximum)	3,550 Sheets/6 Sources
Output Capacity (Standard)	500 Sheets(with Bridge Unit 250 Sheets)
Output Capacity (Optional)	9 Bin Mailbox - 100 Sheets per Bin with 500 Sheet Proof Tray; 1,000 Sheet Finisher; 3,000 Sheet Finisher
Output Capacity (Maximum)	4,900 Sheets
Paper Size	5.5" x 8.5" - 11" x 17"
Paper Weight	Paper Trays and LCT 20 - 28 lb. Bypass Tray 14 - 44 lb. Duplex Tray 17 - 28 lb.
Automatic Duplex Printing	Standard, Vertical, Stackless
Continuous Duplex Print Speed	45 IPM (Images Per Minute - Letter)

CONTROLLER SPECIFICATIONS

CPU	RM7000A, 300 MHz with 64 Bit ASIC
Interface	IEEE 1284 ECP, Nibble Compatible
Network Interface	100/10BaseT, optional IEEE1394 I/F
RAM Memory Capacity	Standard 64 MB DRAM, 1 additional slot
Maximum Memory Size	320 MB
Standard PDL	PCL6 (PCL5e & XL) emulation; Adobe PostScript 3, RPCS
Resolution	PCL5e: 600/300 dpi; PCL6: 600 dpi; PS3: 600 dpi; RPCS: 600 dpi
Resolution Enhancement	Edge Smoothing (1200 dpi)
Fonts	35 Intellifont, 10 TrueType Fonts, 1 Bitmap Font, 31 Fonts can be downloaded by Agfa Font Manager, 136 Adobe Type 1 Fonts
Driver	PCL5e - Windows 95/98/Me/NT 4.0/2000/XP PCL6 - Windows 95/98/Me/NT 4.0/2000/XP RPCS - Windows 95/98/Me/NT 4.0/2000/XP Adobe PostScript 3 - Windows 95/98/Me/XP/NT 4.0/2000/Macintosh OS 8.6 or later

Network Interface Specifications*

Topology	Ethernet 10/100BaseT
Network Interface Connector	RJ-45
Network Protocols	TCP/IP, IPX/SPX, NetBEUI, IPP, AppleTalk
Network Operating Systems	Novell NetWare - 3.x; 4.x with Bindery Emulation; 4.x in Native (NDS) Mode; 5.0, 5.1 TCP/IP - Using LPR: Windows 3.x/95/98/2000; Windows NT 4.0 Peer-to-Peer - Windows IP Peer-to-Peer Printing; Windows 95/98/2000, NT 4.0 AppleTalk - Using Ethertalk protocol
Utilities	SmartNetMonitor; Web Browser; Agfa Font Manager; Printer Utility for Mac; DeskTopBinder

*Windows 3.1, PCL5e and PCL6 drivers available from www.savin.com

RT36 LARGE CAPACITY TRAY

Capacity	1,500 Sheets
Paper Size	11" x 8.5"
Paper Weight	20 - 28 lb.
Dimensions (WxDxH)	15.4" x 19.7" x 15.4"
Weight	37.5 lbs.



Our earth.
Our tomorrow.



Savin

Savin Corporation Stamford, Connecticut 06904 ©2001 Savin Corporation. SAVIN® is a registered trademark of Savin Corporation. All other trademarks are the property of their respective owners. Product specifications subject to change without notice. Printed in U.S.A. (S1585) 35M 12/01

SR730 FINISHER

Type	Floor Standing
Shift Tray	
Paper Size	5.5" x 8.5" - 11" x 17"
Paper Weight	14 - 42 lbs.
Paper Capacity	
Without Hole Punch	3,000 sheets 8.5" x 11" 1,500 sheets 8.5" x 14", 11" x 17"
With Hole Punch	2,500 sheets 8.5" x 11" 1,500 sheets 8.5" x 14", 11" x 17"
Proof Tray	
Paper Sizes	5.5" x 8.5" - 11" x 17"
Paper Weight	14 - 42 lbs.
Paper Capacity	
Without Hole Punch	250 sheets 8.5" x 11" 50 sheets 8.5" x 14", 11" x 17"
With Hole Punch	200 sheets 8.5" x 11" 50 sheets 8.5" x 14", 11" x 17"
Staple Capacity	
Without Hole Punch	50 sheets 8.5" x 11" 30 sheets 8.5" x 14", 11" x 17"
With Hole Punch	40 sheets 8.5" x 11" 25 sheets 8.5" x 14", 11" x 17" 8.5" x 11" - 11" x 17"
Staple Paper Size	17 - 20 lbs.
Staple Paper Weight	7 positions
Staple Positions	24.7" x 21.5" x 37.8"
Dimensions (WxDxH)	99.3 lbs.
Weight	

SR720 FINISHER

Type	Hanging
Stack Capacity	1,000 sheets 8.5" x 11" 500 sheets 8.5" x 14", 11" x 17" 5.5" x 8.5" - 11" x 17"
Paper Sizes	
Paper Weight	14 - 42 lbs.
Staple Capacity	30 sheets 8.5" x 11" & smaller 20 sheets 8.5" x 14", 11" x 17" 8.5" x 11", 8.5" x 14", 11" x 17"
Staple Paper Size	1 position
Staple Positions	22.4" x 20.5" x 24.6"
Dimensions (WxDxH)	46.3 lbs.
Weight	

CS360 9-BIN ADDRESSABLE MAILBOX

Number of Bins	9 bins and 1 Proof Tray
Paper Size	8.5" x 11" - 11" x 17" per bin 5.5" x 8.5" - 11" x 17" Proof Tray
Paper Capacity	100 sheets per bin; 500 sheets Proof Tray
Paper Weight	16-24 lbs. per bin; 14 - 42 lbs. Proof Tray
Stapling	Not available
Dimensions (WxDxH)	23.6" x 21.7" x 37.8"
Weight	88.2 lbs.
Power Consumption	48W

PS430 PAPER BANK

Capacity	Dual 500-Sheet Paper Trays
Paper Size	8.5" x 11" - 11" x 17" User adjustable
Paper Weight	20 - 28 lb.
Dimensions (WxDxH)	21.3" x 23.7" x 10.7"
Weight	55.2 lbs.

CONTROLLER OPTIONS

Printer Hard Disk Drive Type 4510 (Font Download, Spool, Sample Print, Locked Print)

Type	E-IDE
Capacity	10 GB
RAM DIMMs, SDRAM	
Capacity	64 MB standard 64, 128 and 256 MB option with one slot

IEEE 1394 TYPE 4510

Interface	IEEE 1394 (6 pin)
Number of Ports	2
Data Transmission Speed	400/200/100 mbps

IEEE 1394 Interface is a New Standard Serial Interface for Multimedia products and PC peripherals including printing devices.

Major Features of IEEE 1394	
High Speed Data Transmission	400/200/100 mbps
Easy Connection	Hot Plug and Play
Easy Handling	Thin Cable (.2 in/dia.)

